



## **SnowMax - Standing Seam Fence-Style Snow Guard Submittal Document Set**

### **ROOF TYPES**

- New / Existing Metal Standing Seam

### **AVAILABLE MATERIALS**

- Aluminum 6000 Series (AL)

### **AVAILABLE FINISHES**

- Mill Finish (Standard)
- Optional Color Insert Strip: Pre-Painted Kynar® Stock Colors

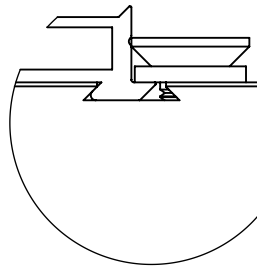
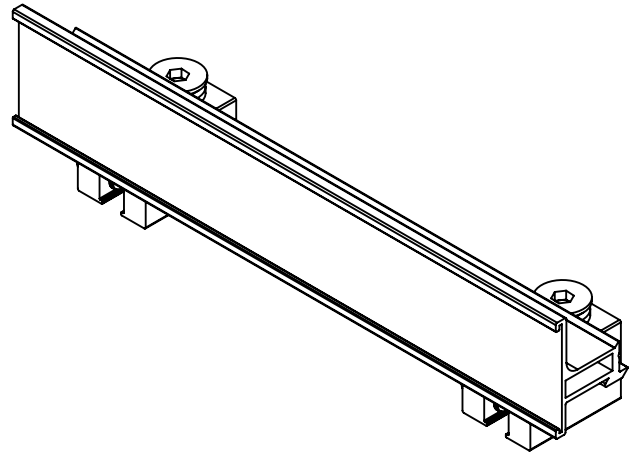
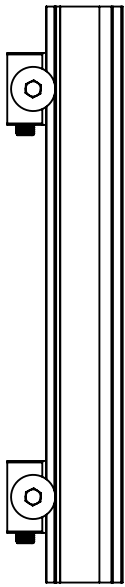
### **FEATURES/ADVANTAGES**

- Set screws provide a secure attachment point without penetrating roofing materials
- Configurations available for both vertical seams and some horizontal seams
- Clamp-to-seam technology will not void panel manufacturers warranties
- Optional fixed position ice flags & color insert strips
- Increased bracket spacing (up to 48" on center)

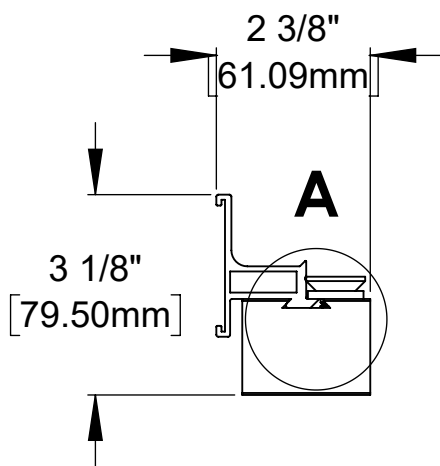


# Cut Sheet - SNOWMAX-STANDING SEAM

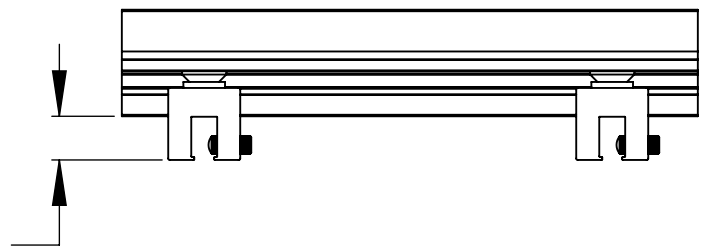
1. Installation to be completed in accordance with manufacturer's written specifications and installation instructions.
2. See spec sheet or contact manufacturer for detailed material, finishes, and configuration options.
3. Contact manufacturer for detailed layout.
4. Do not scale drawings.
5. Subject to change without notice.
6. For patent information, visit our [Patent Page](#).



**DETAIL A**  
**SCALE 2 : 3**



15/16"  
[23.11mm]



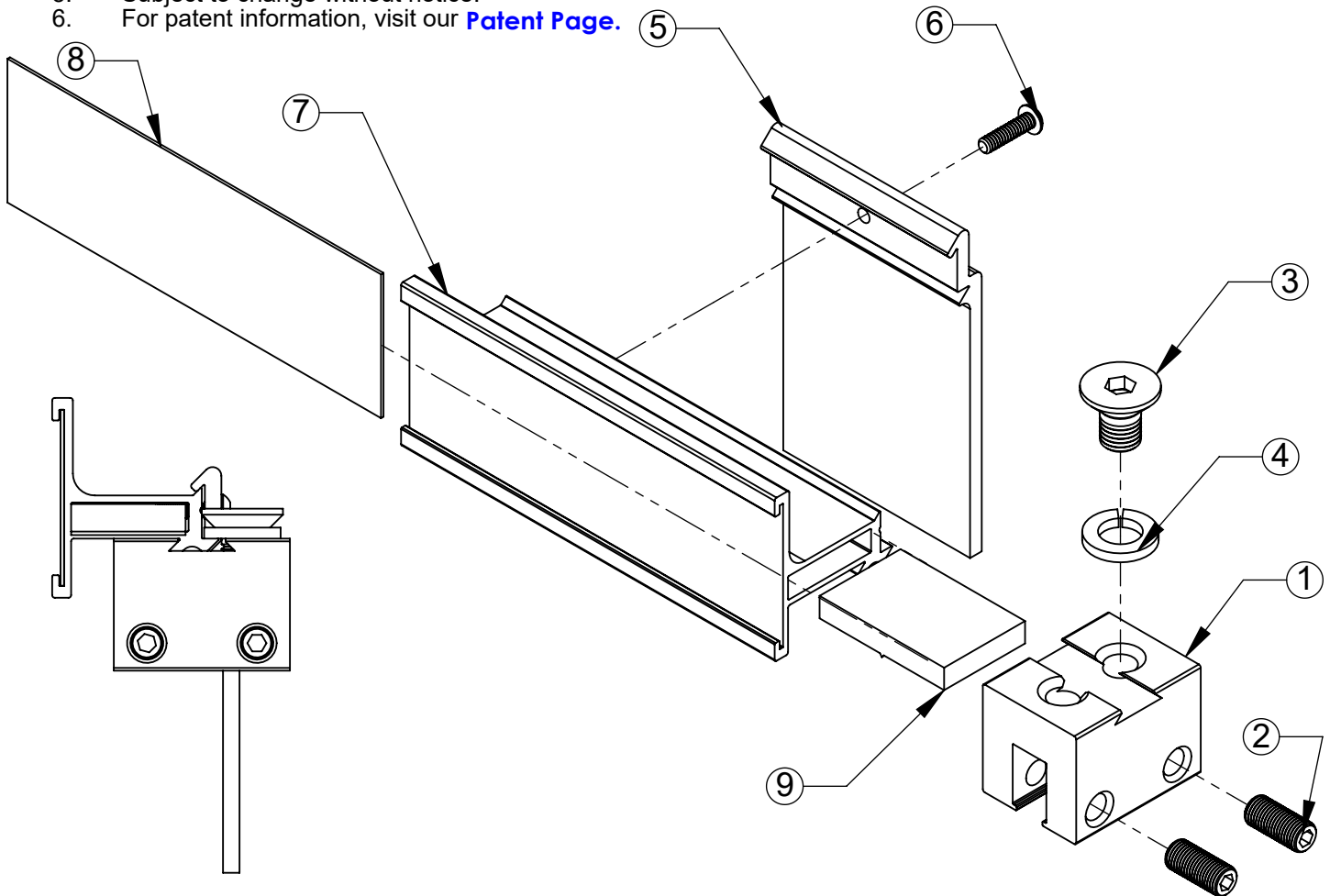
289 Harrel Street  
Morrisville, VT 05661  
Phone: 1.888.766.4273  
Fax: 1.888.766.9994  
Email: [Info@alpinesnowguards.com](mailto:Info@alpinesnowguards.com)

Scale: 1:4

4/20/2022

# Assembly Sheet - SNOWMAX-STANDING SEAM

1. Installation to be completed in accordance with manufacturer's written specifications and installation instructions.
2. See spec sheet or contact manufacturer for detailed material, finishes, and configuration options.
3. Contact manufacturer for detailed layout.
4. Do not scale drawings.
5. Subject to change without notice.
6. For patent information, visit our [Patent Page](#).



ITEM NO.	PART CODE	DESCRIPTION	QTY
1	SNOWMAX-BLOCK (U2 SHOWN)	SNOWMAX U BLOCK 2"-AL WHW (OTHER BLOCKS AVAILABLE)	1
2	SET-O SS-.375-24X1	SS SET SCREW OP .3750-24X1 (INCLUDED IN POLY KIT SET SCREW)	2
3	B-FLT SS-M12X1.75X.25	SS FLAT HEAD BOLT M12-1.75X.25 (INCLUDED IN POLY KIT SM U2)	1
4	W-LOCK SS-.5	SS LOCK WASHER .5 ID (INCLUDED IN POLY KIT SM U2)	1
5	SNOWMAX-IF	SNOWMAX ICE FLAG-AL (OPTIONAL)	AS NEEDED
6	SCRW SS-10X.75	SS TEK SCREW #10X.75 PAN HEAD (INCLUDED IN POLY KIT SM ICE FLAG)	1 PER ICE FLAG
7	SNOWMAX-LITE-BAR	SNOWMAX LITE BAR 2"-AL (8' LENGTHS)	AS NEEDED
8	SNOWMAX-CI	SNOWMAX 2" COLOR INSERT (OPTIONAL, 8' LENGTHS)	AS NEEDED
9	SNOWMAX-LIGHT SPLICE	SNOWMAX LIGHT SPLICE PLATE (INCLUDED WITH BAR)	AS NEEDED

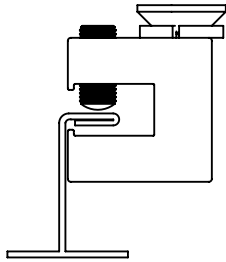


289 Harrel Street  
 Morrisville, VT 05661  
 Phone: 1.888.766.4273  
 Fax: 1.888.766.9994  
 Email: [Info@alpinesnowguards.com](mailto:Info@alpinesnowguards.com)

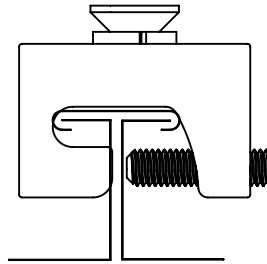
Scale: 1:2

4/21/2022

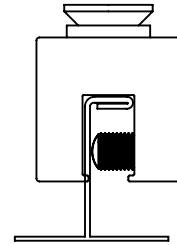
# SNOWMAX SEAM CONFIGURATIONS



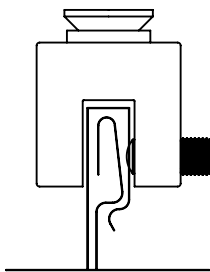
Snowmax-UT2  
Single Lock 5/8" or Larger Seam Width



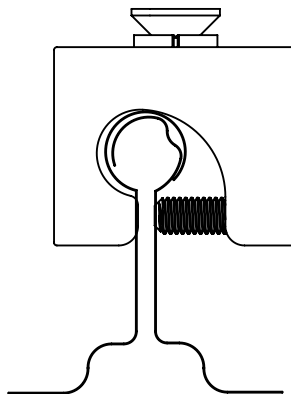
Snowmax-T2  
Tee Seam



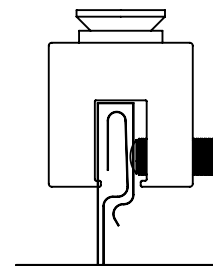
Snowmax-U2  
Single Lock 1/2" or Less Seam Width



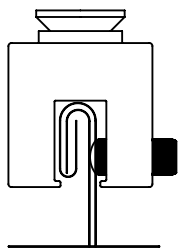
Snowmax-U2 Milled  
Snap Lock 1/2"-9/16" Seam Width



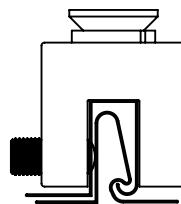
Snowmax-Z2  
Bulb Seam



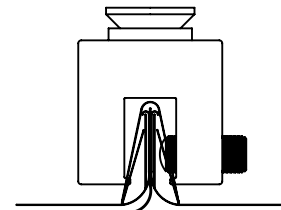
Snowmax-U2  
Snap Lock 7/16" or Less Seam Width



Snowmax-U2  
Double Lock



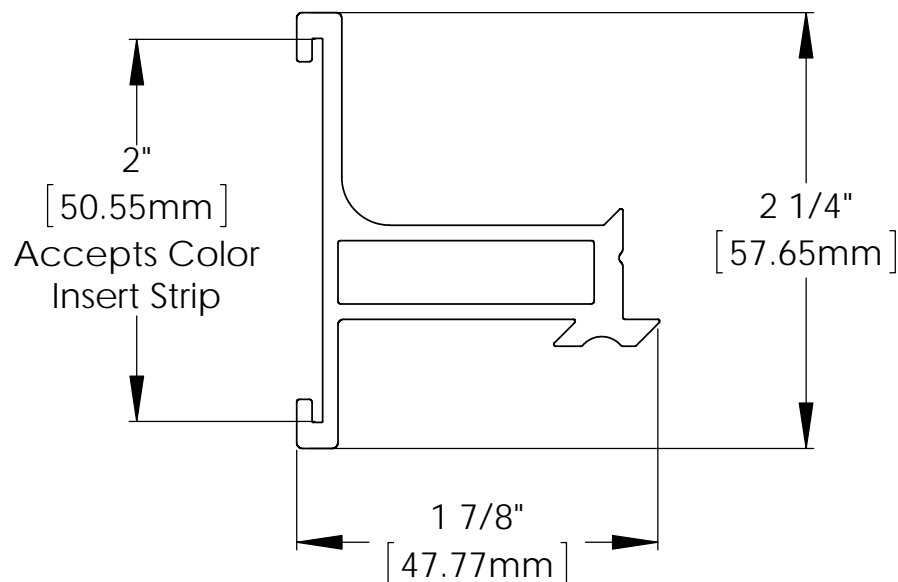
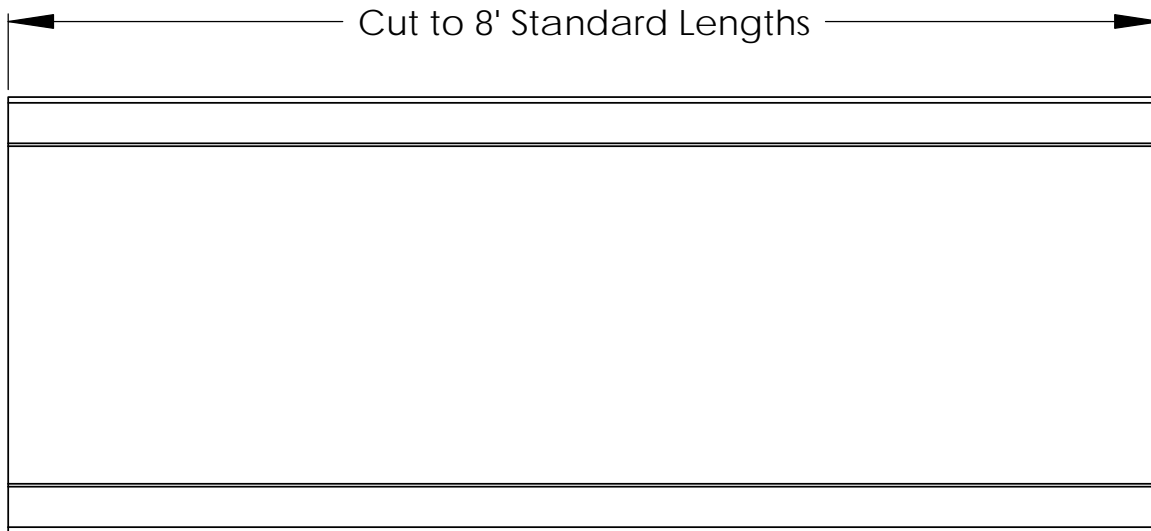
Snowmax-U2 Milled  
Vertical Nail Flange 33/64" or Less Seam Width



Snowmax-U2  
Applied Batten Cap

# Cut Sheet - SNOWMAX-LITE-BAR

1. Installation to be completed in accordance with manufacturer's written specifications and installation instructions.
2. See spec sheet or contact manufacturer for detailed material, finishes, and configuration options.
3. Contact manufacturer for detailed layout.
4. Do not scale drawings.
5. Subject to change without notice.
6. For patent information, visit our [Patent Page](#).



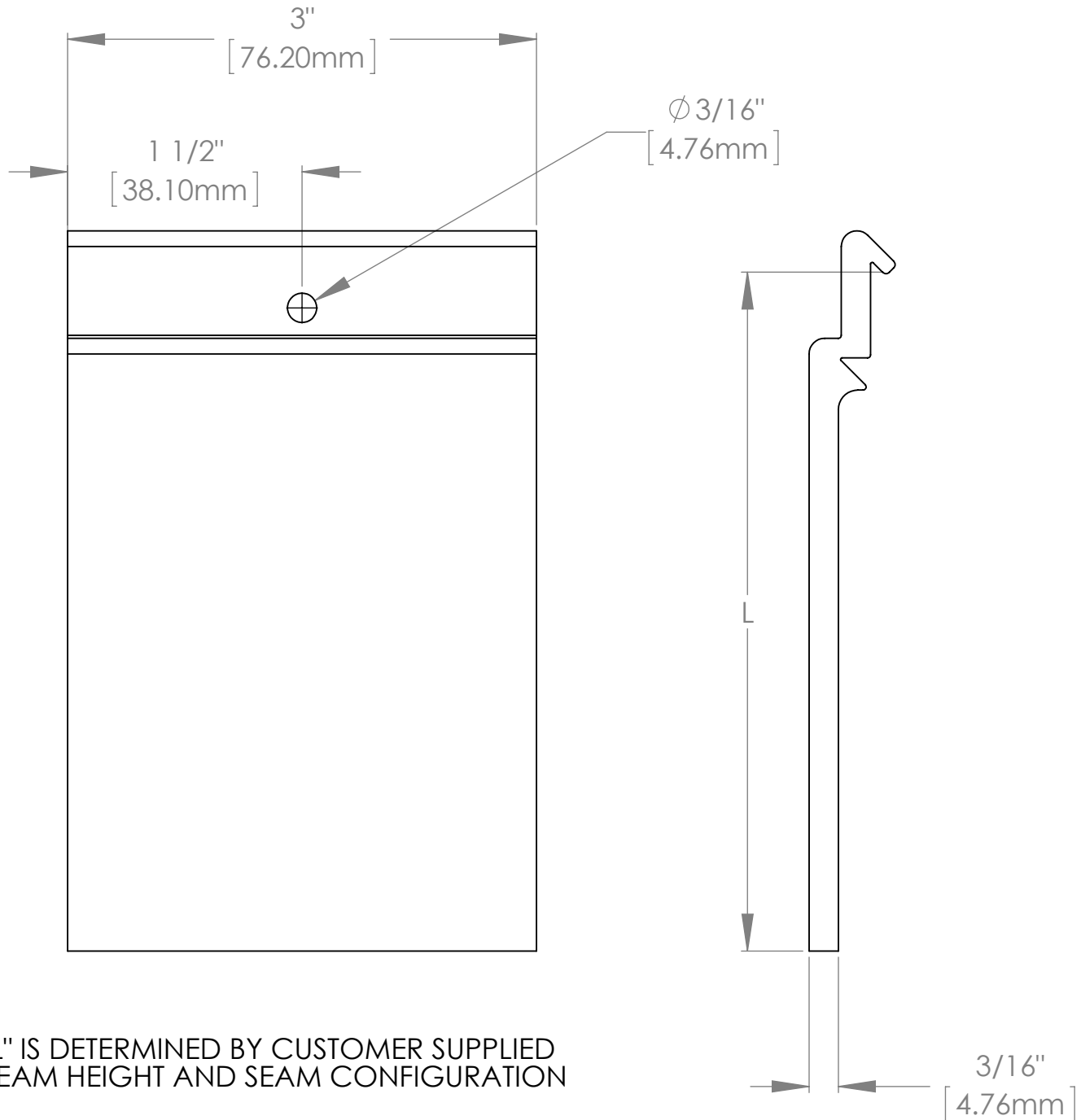
289 Harrel Street  
Morrisville, VT 05661  
Phone: 1.888.766.4273  
Fax: 1.888.766.9994  
Email: [Info@alpinesnowguards.com](mailto:Info@alpinesnowguards.com)

Scale: 1:1

8/26/2019

# Cut Sheet - SNOWMAX-IF

1. Installation to be completed in accordance with manufacturer's written specifications and installation instructions.
2. See spec sheet or contact manufacturer for detailed material, finishes, and configuration options.
3. Contact manufacturer for detailed layout.
4. Do not scale drawings.
5. Subject to change without notice.
6. For patent information, visit our [Patent Page](#).



289 Harrel Street  
Morrisville, VT 05661  
Phone: 1.888.766.4273  
Fax: 1.888.766.9994  
Email: [Info@alpinesnowguards.com](mailto:Info@alpinesnowguards.com)

Scale: 1:1

6/12/2019

# Cut Sheet - SNOWMAX-U2

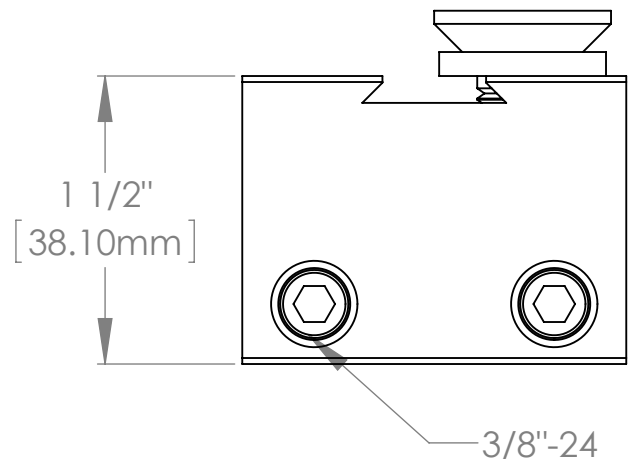
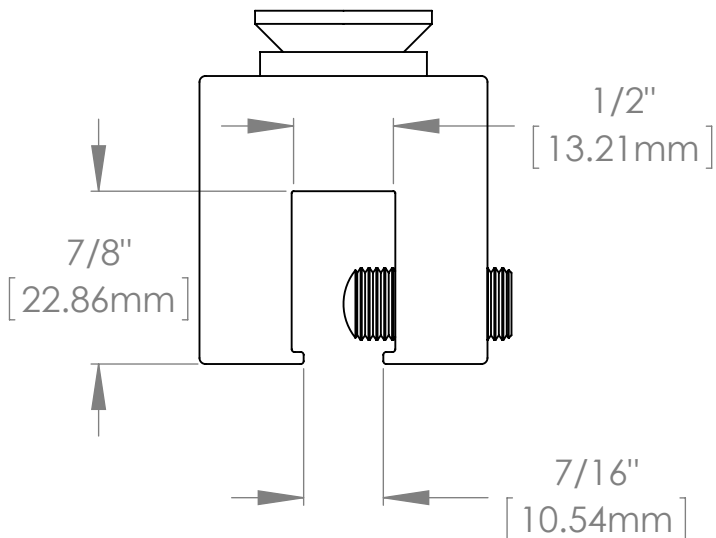
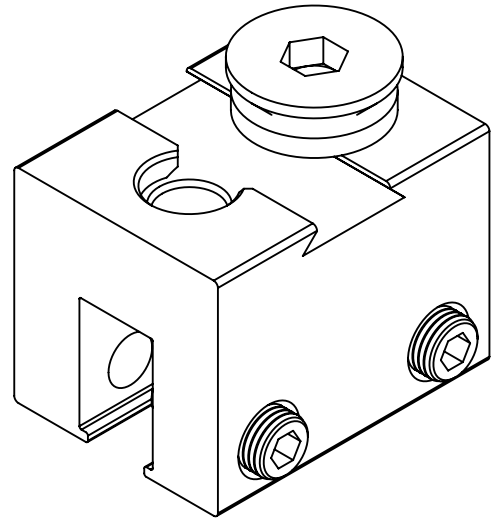
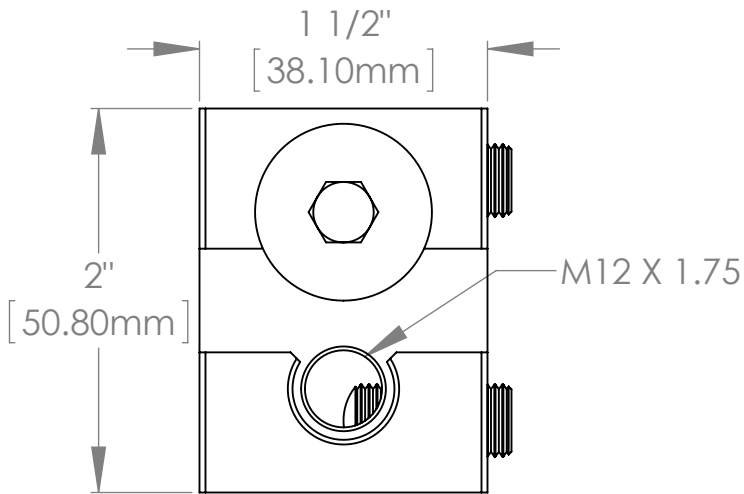
1. Installation to be completed in accordance with manufacturer's written specifications and installation instructions.
2. See spec sheet or contact manufacturer for detailed material, finishes, and configuration options.
3. Contact manufacturer for detailed layout.
4. Do not scale drawings.
5. Subject to change without notice.

I have verified that this clamp/bracket will fit the seam for this project.

Quote #: \_\_\_\_\_

Signature: \_\_\_\_\_ Date: \_\_\_\_\_

To confirm order, return signed cut sheet and sales quote.



289 Harrel Street  
Morrisville, VT 05661  
Phone: 1.888.766.4273  
Fax: 1.888.766.9994  
Email: [Info@alpinesnowguards.com](mailto:Info@alpinesnowguards.com)

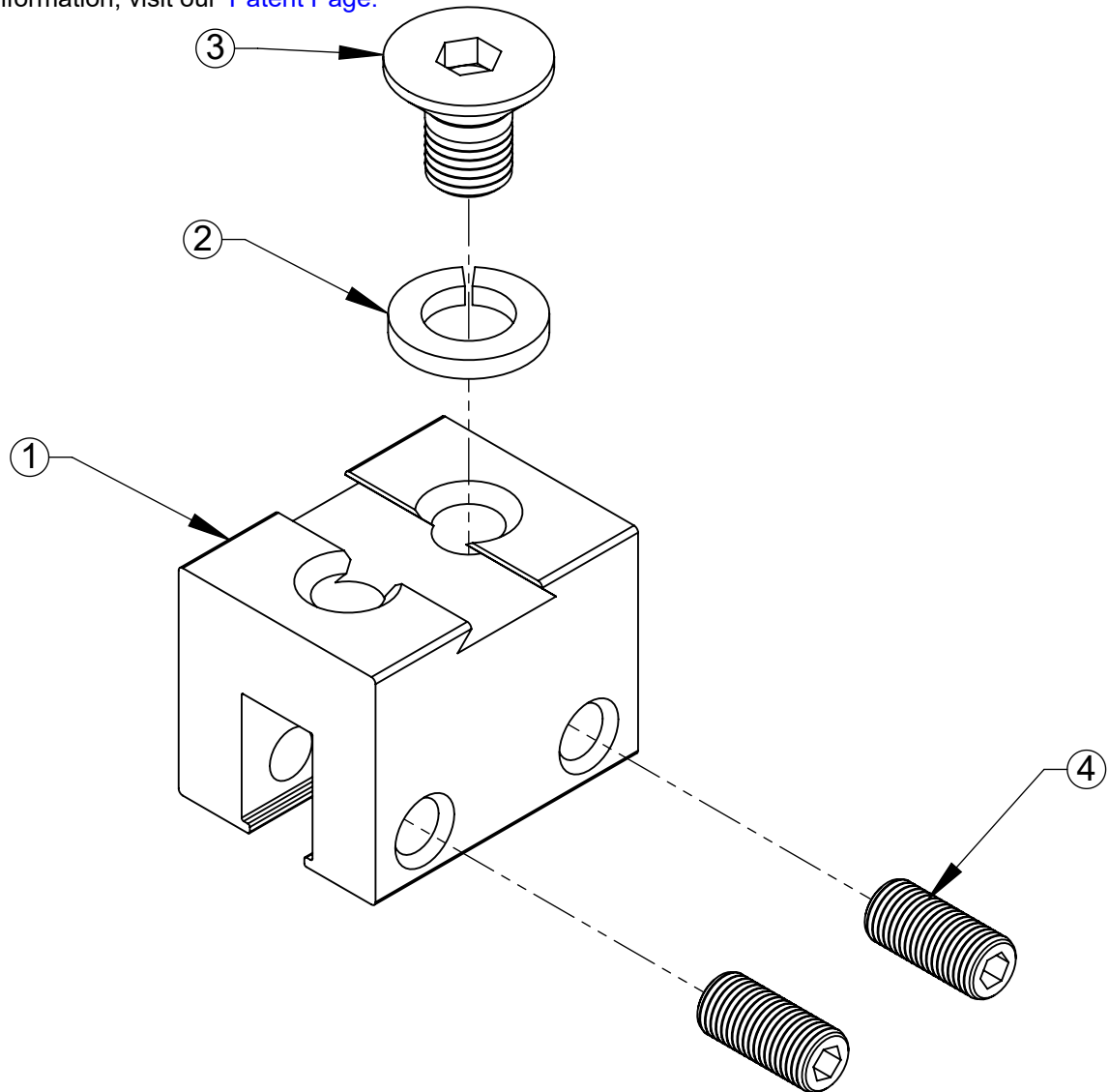
Scale: 1:1

2/14/2018



# Assembly Sheet - SNOWMAX-U2

1. Installation to be completed in accordance with manufacturer's written specifications and installation instructions.
2. See spec sheet or contact manufacturer for detailed material, finishes, and configuration options.
3. Contact manufacturer for detailed layout.
4. Do not scale drawings.
5. Subject to change without notice.
6. For patent information, visit our [Patent Page](#).



ITEM NO.	PART CODE	DESCRIPTION	QTY
1	SNOWMAX-U2	SNOWMAX U BLOCK 2"-AL WHW	1
2	W-LOCK SS-.5	SS LOCK WASHER .5 ID (INCLUDED IN POLY KIT SM U2)	1
3	B-FLT SS-M12X1.75X25	SS FLAT HEAD BOLT M12X1.75X25 (INCLUDED IN POLY KIT SM U2)	1
4	SET-O SS-.375-24X1	SS SET SCREW OP .3750-24X1 (INCLUDED IN POLY KIT SET SCREW)	2



289 Harrel Street  
Morrisville, VT 05661  
Phone: 1.888.766.4273  
Fax: 1.888.766.9994  
Email: [Info@alpinesnowguards.com](mailto:Info@alpinesnowguards.com)

Scale: 1:1

7/1/2022



# Cut Sheet - SNOWMAX-U2-MILLED

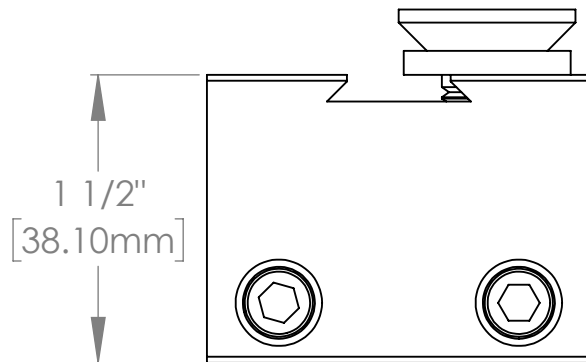
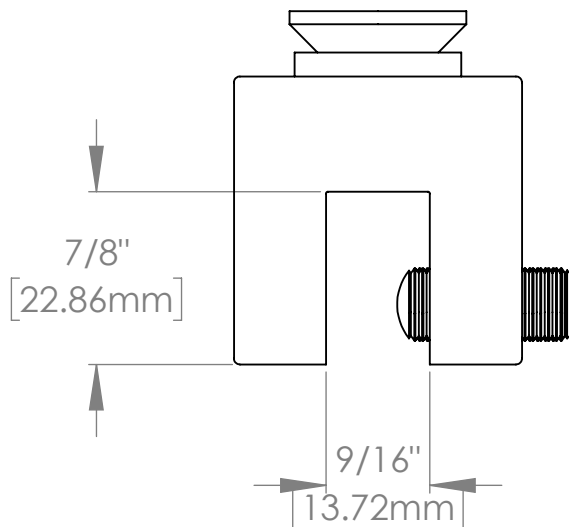
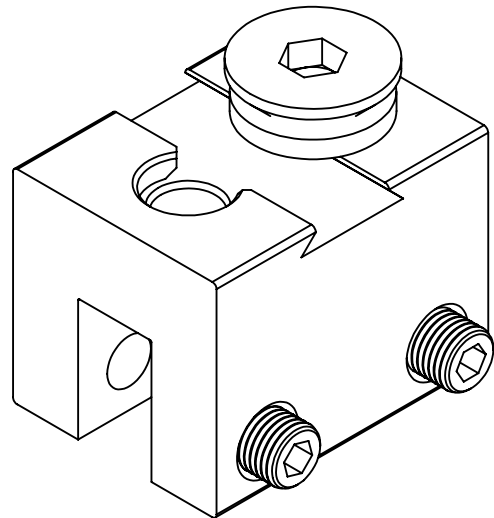
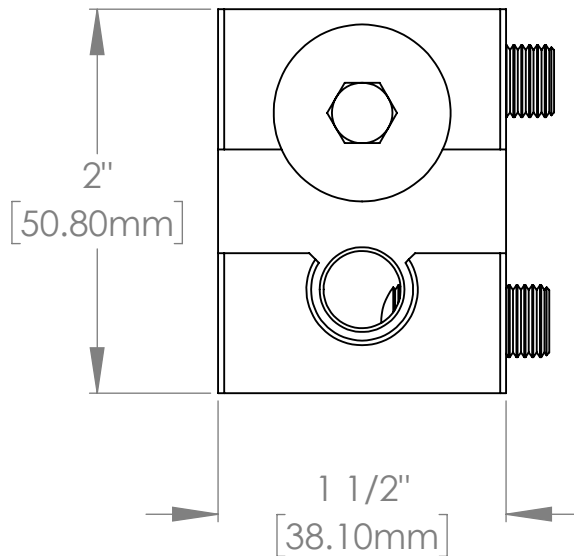
1. Installation to be completed in accordance with manufacturer's written specifications and installation instructions.
2. See spec sheet or contact manufacturer for detailed material, finishes, and configuration options.
3. Contact manufacturer for detailed layout.
4. Do not scale drawings.
5. Subject to change without notice.
6. For patent information, visit our [Patent Page](#).

I have verified that this clamp/bracket will fit the seam for this project.

Quote #: \_\_\_\_\_

Signature: \_\_\_\_\_ Date: \_\_\_\_\_

To confirm order, return signed cut sheet and sales quote.



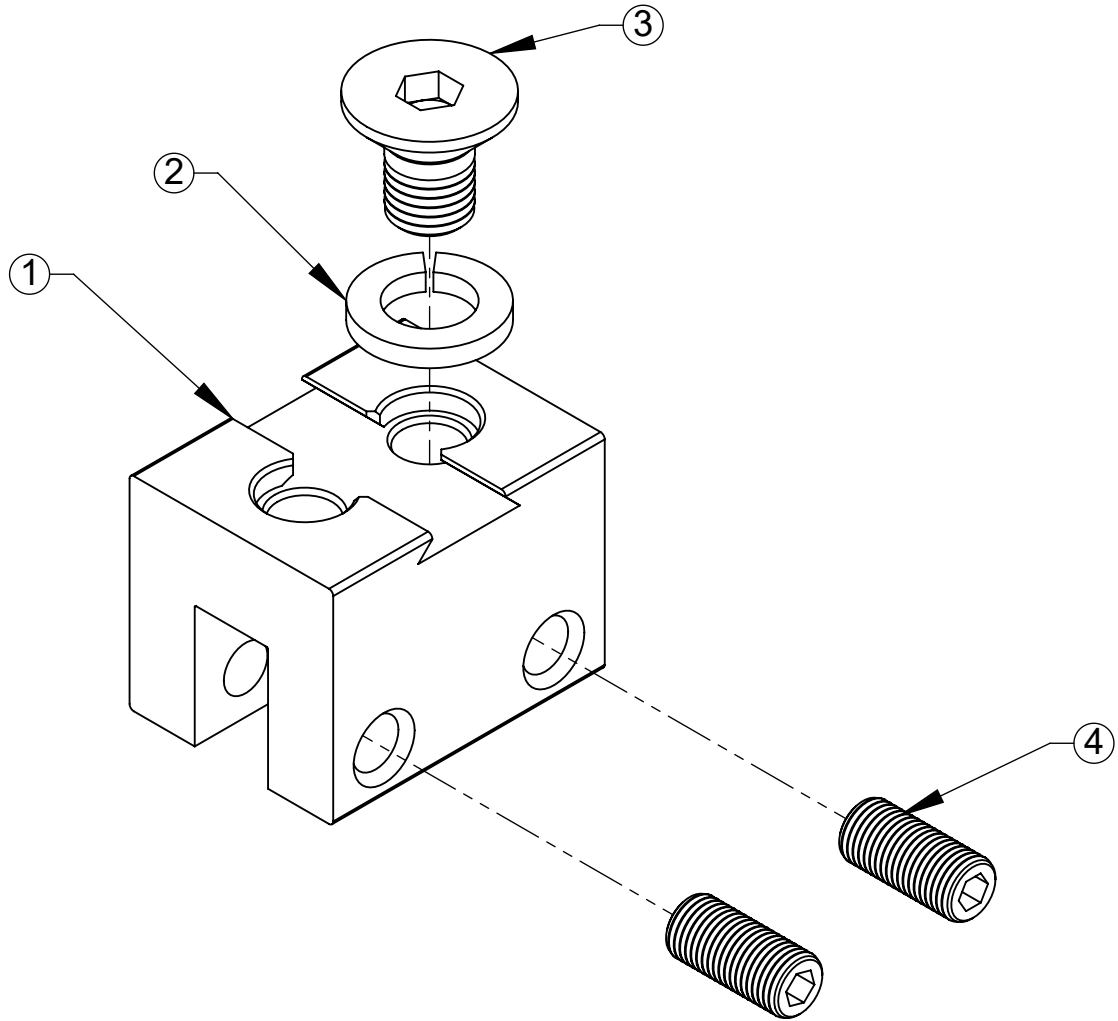
289 Harrel Street  
Morrisville, VT 05661  
Phone: 1.888.766.4273  
Fax: 1.888.766.9994  
Email: [Info@alpinesnowguards.com](mailto:Info@alpinesnowguards.com)

Scale: 1:1

12/23/2021

# Assembly Sheet - SNOWMAX-U2 MILLED

1. Installation to be completed in accordance with manufacturer's written specifications and installation instructions.
2. See spec sheet or contact manufacturer for detailed material, finishes, and configuration options.
3. Contact manufacturer for detailed layout.
4. Do not scale drawings.
5. Subject to change without notice.
6. For patent information, visit our [Patent Page](#).



ITEM NO.	PART CODE	DESCRIPTION	QTY
1	SNOWMAX-U2 MILLED	SNOWMAX U BLOCK 2"-AL-MILLED	1
2	W-LOCK SS-.5	SS LOCK WASHER .5 ID (INCLUDED IN POLY KIT SM U2)	1
3	B-FLT SS-M12X1.75X25	SS FLAT HEAD BOLT M12X1.75X25 (INCLUDED IN POLY KIT SM U2)	1
4	SET-O SS-.375-24X1	SS SET SCREW OP .3750-24X1 (INCLUDED IN POLY KIT SET SCREW)	2



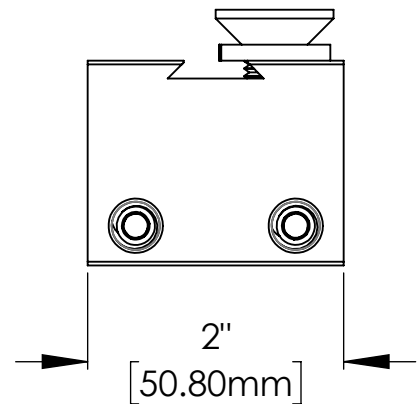
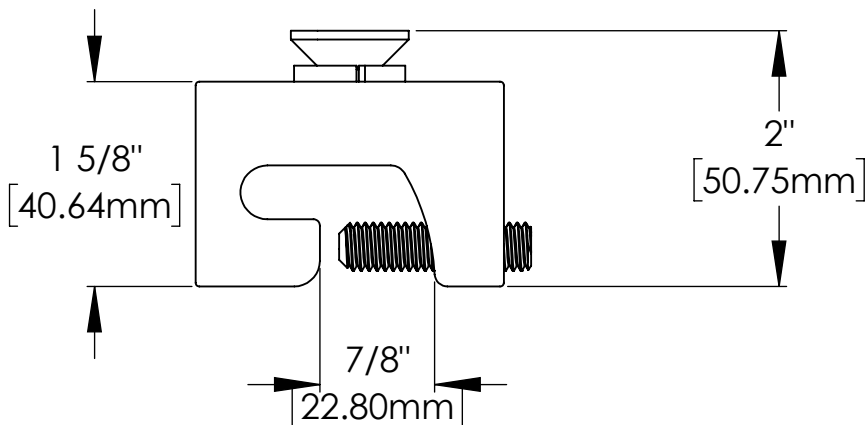
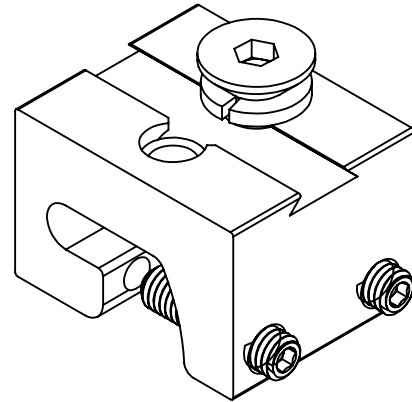
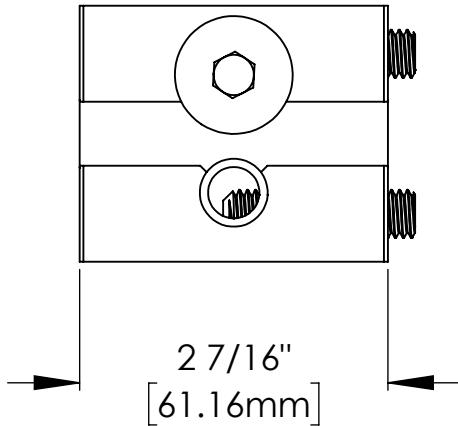
289 Harrel Street  
Morrisville, VT 05661  
Phone: 1.888.766.4273  
Fax: 1.888.766.9994  
Email: [Info@alpinesnowguards.com](mailto:Info@alpinesnowguards.com)

Scale: 1:1

7/1/2022

# Cut Sheet - SnowMax-T2

1. Installation to be completed in accordance with manufacturer's written specifications and installation instructions.
2. See spec sheet or contact manufacturer for detailed material, finishes, and configuration options.
3. Contact manufacturer for detailed layout.
4. Do not scale drawings.
5. Subject to change without notice.
6. For patent information, visit our [Patent Page](#).



I have verified that this clamp/bracket will fit the seam for this project.

Quote #: \_\_\_\_\_

Signature: \_\_\_\_\_ Date: \_\_\_\_\_

To confirm order, return signed cut sheet and sales quote.



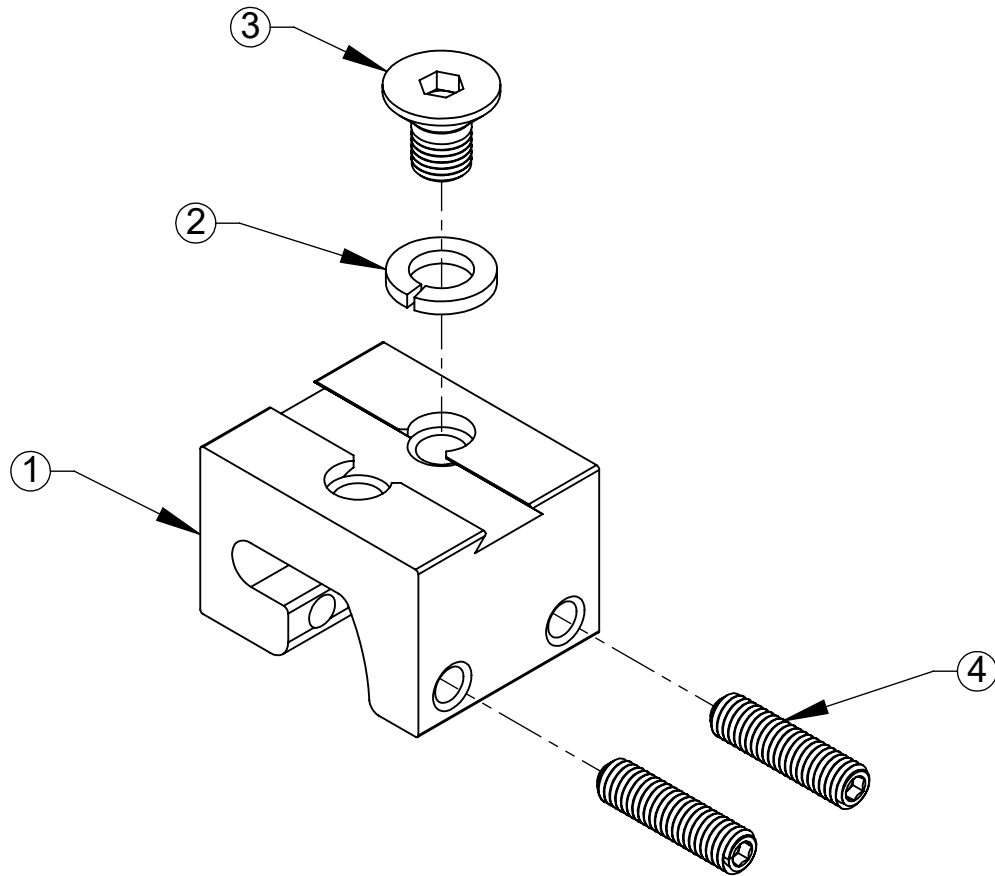
289 Harrel Street  
Morrisville, VT 05661  
Phone: 1.888.766.4273  
Fax: 1.888.766.9994  
Email: [Info@alpinesnowguards.com](mailto:Info@alpinesnowguards.com)

Scale: 2:3

12/16/2021

# Assembly Sheet - SNOWMAX-T2

1. Installation to be completed in accordance with manufacturer's written specifications and installation instructions.
2. See spec sheet or contact manufacturer for detailed material, finishes, and configuration options.
3. Contact manufacturer for detailed layout.
4. Do not scale drawings.
5. Subject to change without notice.
6. For patent information, visit our [Patent Page](#).



ITEM NO.	PART CODE	DESCRIPTION	QTY
1	SNOWMAX-T2	SNOWMAX T2 BLOCK 2"-AL	1
2	W-LOCK SS-.5	SS LOCK WASHER .5 ID (INCLUDED IN POLY KIT SM U2)	1
3	B-FLT SS-M12X1.75X25	SS FLAT HEAD BOLT M12X1.75X25 (INCLUDED IN POLY KIT SM U2)	1
4	SET-C SS-.375-16X1.5	SS CUP PT SET SCRW 3/8-16X1.5 (INCLUDED IN POLY KIT SET SCW 1.5)	2



289 Harrel Street  
Morrisville, VT 05661  
Phone: 1.888.766.4273  
Fax: 1.888.766.9994  
Email: [Info@alpinesnowguards.com](mailto:Info@alpinesnowguards.com)

Scale: 2:3

2/13/2025

# Cut Sheet - SNOWMAX-UT2

1. Installation to be completed in accordance with manufacturer's written specifications and installation instructions.
2. See spec sheet or contact manufacturer for detailed material, finishes, and configuration options.
3. Contact manufacturer for detailed layout.
4. Do not scale drawings.
5. Subject to change without notice.
6. For patent information, visit our [Patent Page](#).

I have verified that this clamp/bracket will fit the seam for this project.

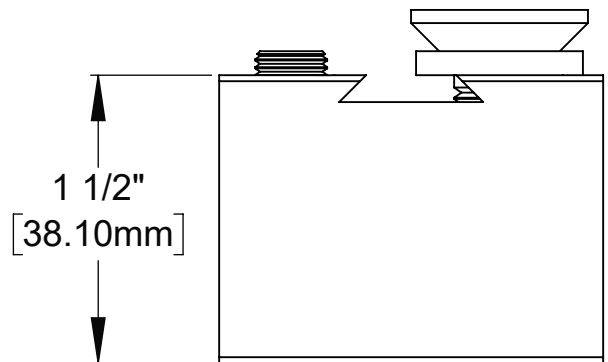
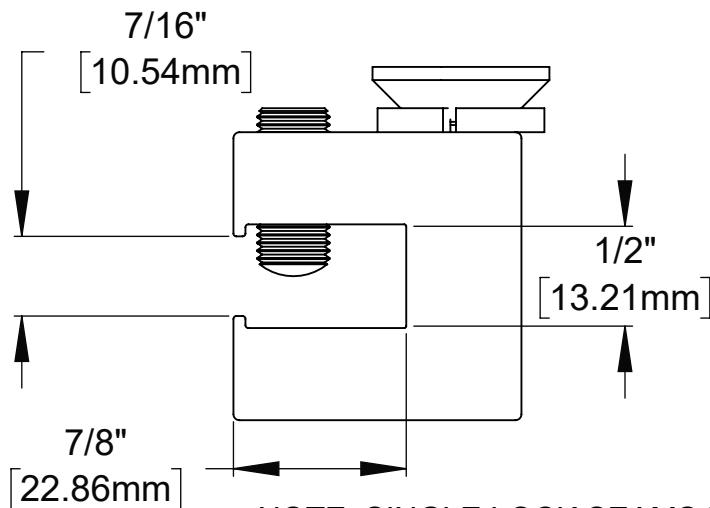
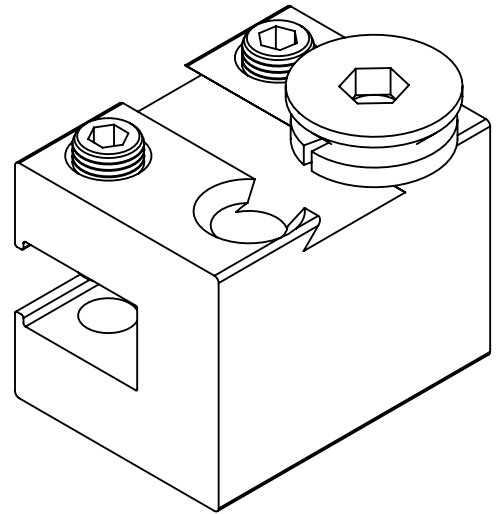
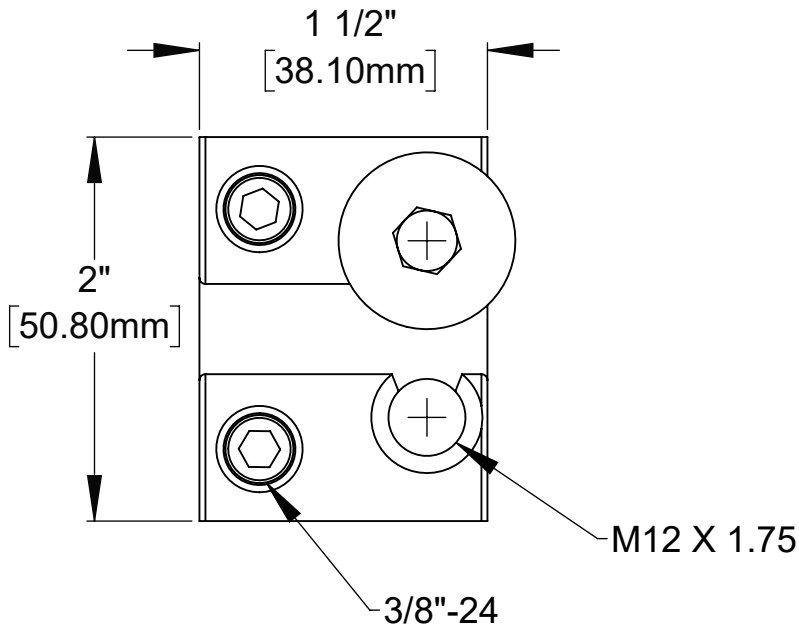
Quote

#:

Signature: \_\_\_\_\_

Date: \_\_\_\_\_

To confirm order, return signed cut sheet and sales quote.



NOTE: SINGLE LOCK SEAMS MUST HAVE A HORIZONTAL LEG MEASUREMENT OF 5/8" OR GREATER FOR CLAMP TO ATTACH



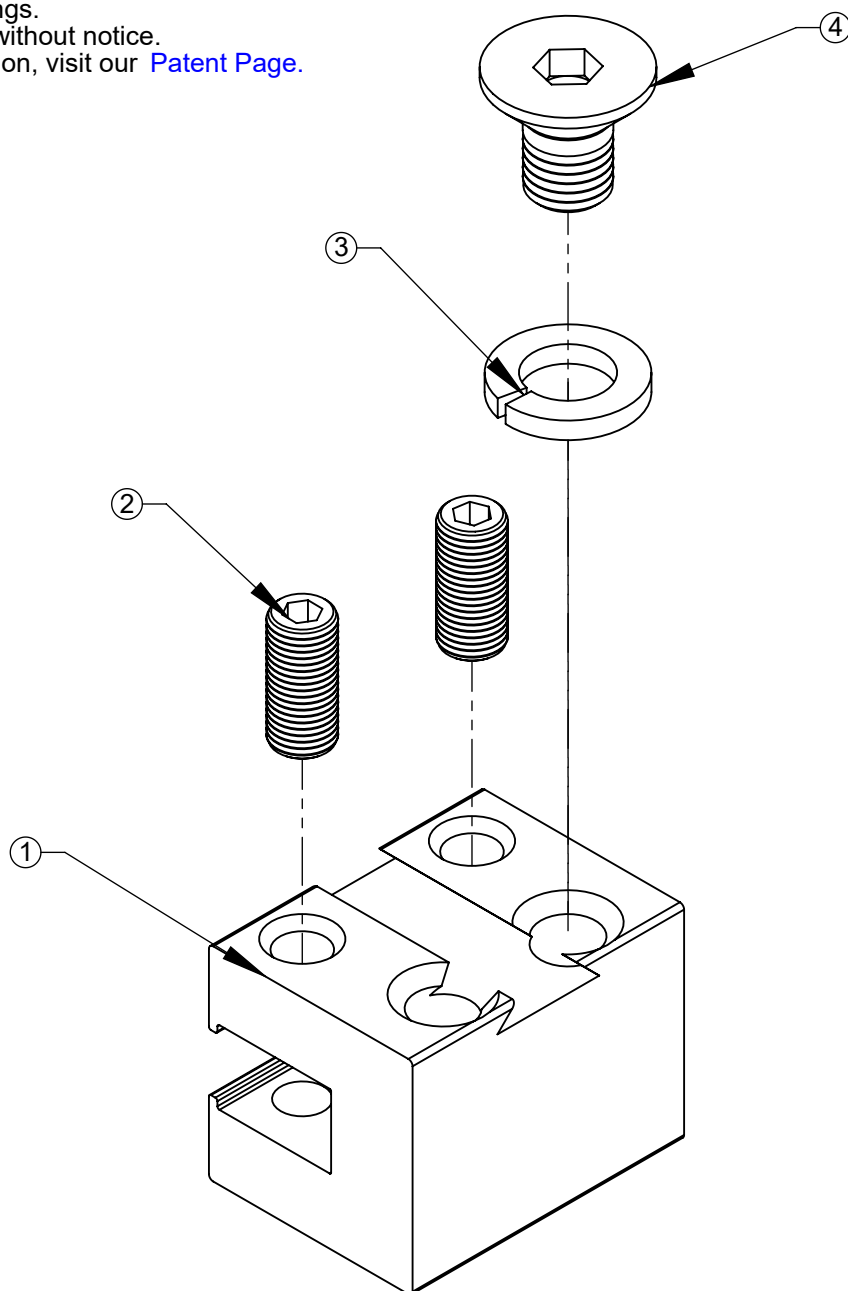
289 Harrel Street  
Morrisville, VT 05661  
Phone: 1.888.766.4273  
Fax: 1.888.766.9994  
Email: [Info@alpinesnowguards.com](mailto:Info@alpinesnowguards.com)

Scale: 1:1

6/14/2022

# Assembly Sheet - SNOWMAX-UT2

1. Installation to be completed in accordance with manufacturer's written specifications and installation instructions.
2. See spec sheet or contact manufacturer for detailed material, finishes, and configuration options.
3. Contact manufacturer for detailed layout.
4. Do not scale drawings.
5. Subject to change without notice.
6. For patent information, visit our [Patent Page](#).



ITEM NO.	PART CODE	DESCRIPTION	QTY
1	SNOWMAX-UT2	SNOWMAX UT BLOCK 2"-AL	1
2	SET-O SS-.375-24X.875	SS SET SCREW OP .3750-24X.875 (INCLUDED IN POLY KIT SET SCW.875)	2
3	W-LOCK SS-.5	SS LOCK WASHER .5 ID (INCLUDED IN POLY KIT SM U2)	1
4	B-FLT SS-M12X1.75X25	SS FLAT HEAD BOLT M12X1.75X25 (INCLUDED IN POLY KIT SM U2)	1



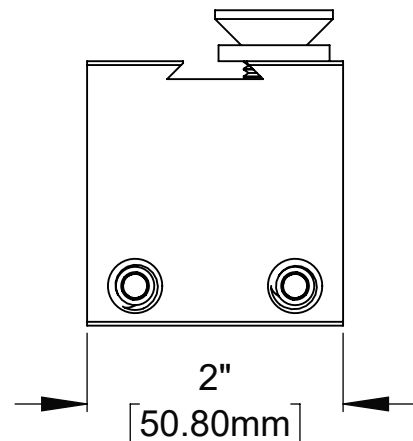
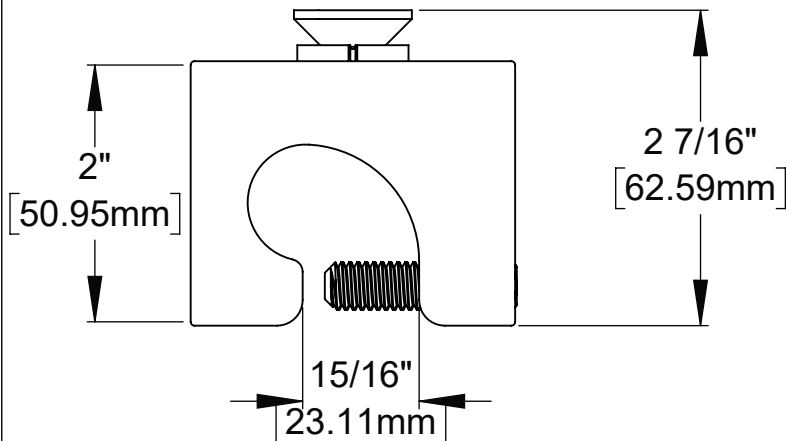
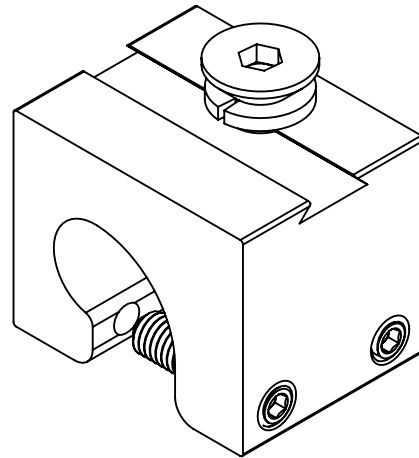
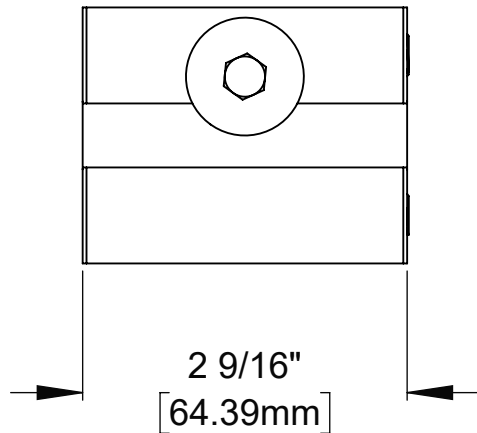
289 Harrel Street  
 Morrisville, VT 05661  
 Phone: 1.888.766.4273  
 Fax: 1.888.766.9994  
 Email: [Info@alpinesnowguards.com](mailto:Info@alpinesnowguards.com)

Scale: 1:1

6/14/2022

# Cut Sheet - SNOWMAX-Z2

1. Installation to be completed in accordance with manufacturer's written specifications and installation instructions.
2. See spec sheet or contact manufacturer for detailed material, finishes, and configuration options.
3. Contact manufacturer for detailed layout.
4. Do not scale drawings.
5. Subject to change without notice.
6. For patent information, visit our [Patent Page](#).



I have verified that this clamp/bracket will fit the seam for this project.

Quote #: \_\_\_\_\_

Signature: \_\_\_\_\_ Date: \_\_\_\_\_

To confirm order, return signed cut sheet and sales quote.



289 Harrel Street  
Morrisville, VT 05661  
Phone: 1.888.766.4273  
Fax: 1.888.766.9994  
Email: [Info@alpinenowguards.com](mailto:Info@alpinenowguards.com)

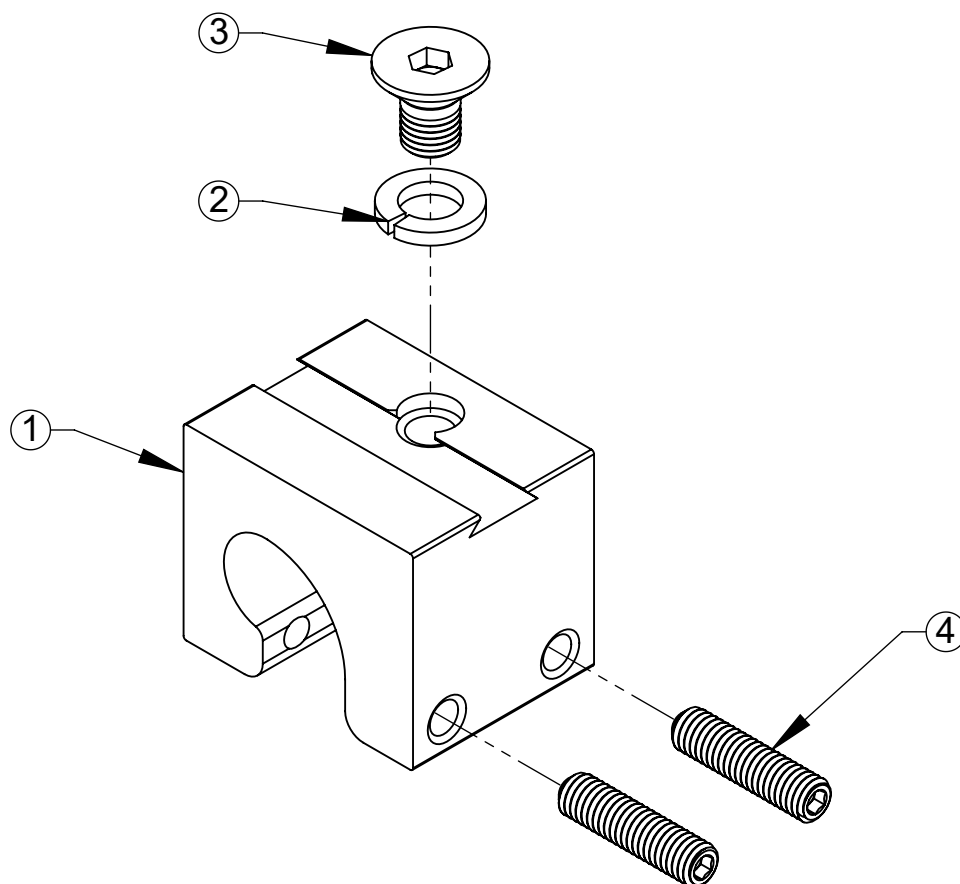
Scale: 2:3

8/11/2022



# Assembly Sheet - SNOWMAX-Z2

1. Installation to be completed in accordance with manufacturer's written specifications and installation instructions.
2. See spec sheet or contact manufacturer for detailed material, finishes, and configuration options.
3. Contact manufacturer for detailed layout.
4. Do not scale drawings.
5. Subject to change without notice.
6. For patent information, visit our [Patent Page](#).



ITEM NO.	PART CODE	DESCRIPTION	QTY
1	SNOWMAX-Z2	SNOWMAX Z2 BLOCK 2"-AL	1
2	W-LOCK SS-.5	SS LOCK WASHER .5 ID (INCLUDED IN POLY KIT SM U2)	1
3	B-FLT SS-M12X1.75X25	SS FLAT HEAD BOLT M12X1.75X25 (INCLUDED IN POLY KIT SM U2)	1
4	SET-C SS-.375-16X1.5	SS CUP PT SET SCRW 3/8-16X1.5 (INCLUDED IN POLY KIT SET SCW 1.5)	2



289 Harrel Street  
Morrisville, VT 05661  
Phone: 1.888.766.4273  
Fax: 1.888.766.9994  
Email: [Info@alpinesnowguards.com](mailto:Info@alpinesnowguards.com)

Scale: 2:3

7/1/2022



## **SnowMax Standing Seam Specification Sheet (All Clamp Configurations) Snow Guards**

### **PART 1 – GENERAL**

#### **1.1 SUMMARY**

##### **A. WORK INCLUDES**

1. SnowMax fence style snow guard and standing seam attachment bracket that does not penetrate roof using stainless steel set screws to clamp to seam.
2. Coordinate with installation of roof to assure proper placement of snow guards.
3. Provide appropriate snow guard and fasteners for roof system

##### **B. RELATED SECTIONS**

1. Section 07600: Flashing and Sheet Metal. MasterFormat 2004 07 60 00
2. Section 07310: Shingles MasterFormat 2004 07 31 00
3. Section 07320: Roofing Tiles MasterFormat 2004 07 32 00
4. Division 7: Thermal and Moisture Protection.

#### **1.2 SYSTEM DESCRIPTION**

##### **A. COMPONENTS: Fence style snow guard and clamp-to-seam attachment blocks.**

###### **1. SNOWMAX-LITE-BAR**

- a. SNOWMAX-LIGHT SPLICE (included with bar)

###### **2. Attachment Blocks (configuration based on seam profile):**

- a. SNOWMAX-U2 or SNOWMAX-U2 MILLED or SNOWMAX-T2 or SNOWMAX-UT2 or SNOWMAX-Z2

###### **3. Attachment Block Hardware**

1. W-LOCK SS-.5 (all attachment blocks)
2. B-FLT SS-M12X1.75X25 (all attachment blocks)
3. SET-O SS-.375-24X1 (used with SNOWMAX-U2, SNOWMAX-U2 MILLED, SNOWMAX-UT2)
4. SET-C SS-.375-16X1.5 (used with SNOWMAX-T2, SNOWMAX-Z2)

##### **B. ACCESSORIES**

1. SNOWMAX-IF, Ice Flags, optional
2. SNOWMAX-CI, Color Insert, optional

#### **1.3 QUALITY ASSURANCE**

- ##### **A. Installer to be experienced in installation of specified roofing material and snow guards for not less than 5 years in the area of the project.**

#### **1.4 DELIVERY / STORAGE / HANDLING**

- ##### **A. Inspect material upon delivery and order replacements for any missing or defective items. Keep material dry, covered and off the ground until installed.**



## **SnowMax Standing Seam Specification Sheet (All Clamp Configurations) Snow Guards**

### **PART 2 – PRODUCTS**

#### **2.1 MANUFACTURER**

A. Alpine SnowGuards®, a Division of Vermont Slate & Copper Services, Inc.  
289 Harrel St., Morrisville, VT 05661 | 888-766-4273 | [www.alpinesnowguards.com](http://www.alpinesnowguards.com)

#### **2.2 MATERIALS**

1. SNOWMAX-LITE-BAR – 6000 Series Aluminum
2. SNOWMAX-LIGHT SPLICE – 6000 Series Aluminum
3. All attachment blocks – 6000 Series Aluminum.
4. SET-O SS-.375-24X1 – 304 stainless steel 18.8 alloy
5. SET-C SS-.375-16X1.5 – 304 stainless steel 18.8 alloy
6. B-FLT SS-M12X1.75X25 – 304 stainless steel 18.8 alloy
7. W-LOCK SS-.5 – 18.8 stainless steel
8. SNOWMAX-IF – 6000 Series Aluminum
9. SNOWMAX-CI – .032 aluminum

#### **2.3 FINISH**

- A. Mill Finish – standard
- B. Kynar 500® pre-painted coil – (SNOWMAX-CI only)

### **PART 3 – EXECUTION**

#### **3.1 EXAMINATION**

##### **A. Substrate**

1. Inspect structure on which the brackets are to be installed and verify it will withstand any additional loading that it may incur. Notify general contractor of any deficiencies before installing SnowMax - Standing Seam snow guard.
2. Verify roofing material has been installed correctly prior to installing SnowMax - Standing Seam snow guard.

#### **3.2 INSTALLATION**

- A. Comply with architectural drawings and snow guard manufacturer's recommendations for location of system. Comply with manufacturer's written installation instructions for installation and layout.

Document Version 11.17.22  
07 72 53 Snow Guards



## SnowMax-U2, SnowMax-UT2, SnowMax-T2 and SnowMax-Z2 Installation Instructions

### ROOF TYPES

- New / Existing Metal Standing Seam

### INSTALLATION

#### SnowMax Block (Clamp)

**Machine Folded Seams:** when attaching blocks (clamps) to machine folded seams, (regardless of panel profile and geometry), SnowMax block (clamp) is designed to engage seams by pinching seams with (2) stainless steel set screws.

**Horizontal Seams:** for horizontal seam applications (inverted "L"), set screws must be accessible from top of the block for tightening.

**Snap Together Seams:** on snap together type seams, orient block (clamp) so set screws are opposite the open, or overlap side of the seam.

**Other Seams:** on some types of panel seams, the aspect of block (clamp) orientation is not critical.

**Note:** Some horizontal seams may require additional hand crimping at the block (clamp) location.

1. Two set screws are used in any given SnowMax block (clamp) installation.
2. Position blocks (clamps) appropriately on the panel seam. Using a 3/16" Allen- wrench attachment tip for a 1/4" drive screw gun, tighten and retighten set screws as the seam material compresses. On low seam profiles, a 4" bit extension on the screw gun may help to access the set screw. Tighten set screws to a torque value of 140-180 inch-pounds.

**Note:** Battery-operated screw guns may not deliver consistent screw tension.  
Drywall guns may not deliver adequate tension.

3. Place SnowMax bar on top of SnowMax block (clamp) so the slotted face of the bar is facing down slope. When properly installed, the face of the bar will help hide the block (clamp).
4. Place lock washer on flat head bolt. Insert bolt in top of SnowMax block (clamps) and tighten until lock washer engages the top of the SnowMax block (clamp). Once this interface has been achieved, torque bolt to a minimum of 100 inch-pounds.
5. SnowMax bars are provided in 8' lengths. Each bar comes with a coupling/splice device (rectangular shape) that slides into the slot at the end of the bar. Join successive bars by sliding slotted end over the coupling/splice device.



## SnowMax-U2, SnowMax-UT2, SnowMax-T2 and SnowMax-Z2 Installation Instructions

### SNOW GUARD ACCESSORIES (OPTIONAL)

#### SnowMax - Color Insert

The face of the bar is designed to accept a 2" wide color insert. This is available in a limited color selection from Alpine SnowGuards. Many installers provide this part themselves using roofing material they have on hand.

#### SnowMax-Ice Flag-AL

- Ice flags are optional but recommended, at least on bottom tier of guards (assuming project needs more than one tier).
- Ice Flags are cut to length so flag does not rest on roof panel. Therefore, Alpine SnowGuards will need to know seam height to precut ice flags to proper length.
- To install on panel widths 24" wide or less, center ice flag on the bar between seams and fasten with one Tek screw (provided).
- For panels 25" wide or wider, install 2 ice flags per panel:  
(Example 42" wide / 3 = 14" spacing between seam and ice flag) spaced evenly.

**Note:** Once point of TEK screw is through metal, only tighten enough to engage TEK screw. Do not over-tighten or over-torque with a drill. Tighten by hand only to securely engage flag.

### ASSEMBLY

Assembly detail for SnowMax System is available on [www.alpinesnowguards.com](http://www.alpinesnowguards.com).

- Loads imposed on SnowMax System will be transferred to the panels.  
Panels must be properly attached to building structure to resist these loads.
- This system is not approved as a fall arrest system.

### COMMON INSTALLATION HINTS AND TRICKS

See next page

## SnowMax-U2, SnowMax-UT2, SnowMax-T2 and SnowMax-Z2 Installation Instructions

### COMMON INSTALLATION HINTS AND TRICKS

When a SnowMax-U2 block is installed slightly up or down-slope of the previous block, the gap may be too close to install the lock washer (gap shown in fig. 4a).

Due to tight manufacturing tolerance, this issue is a common occurrence but has a fast and easy solution detailed below.

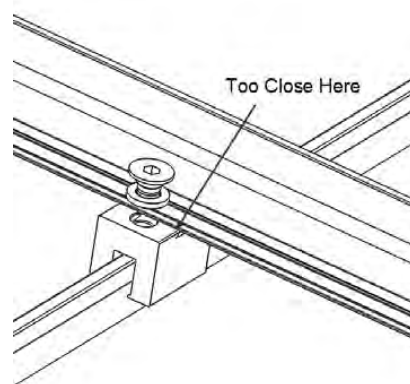
1. Lift slightly or apply down-slope pressure on the free (unfastened) side of the SnowMax bar and insert a small flat head screwdriver as shown in fig. 4b.

If lifting does not create enough of a gap, use a hammer to tap the screwdriver into where the gap should be. This will gouge the aluminum dovetail, on upslope edge of block where the bar engages the block, and will not affect integrity of the system

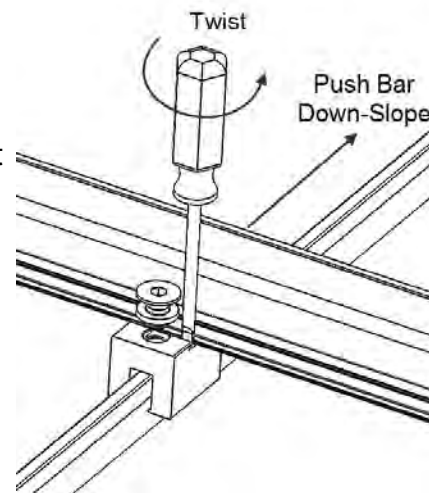
2. Raise handle of screwdriver until it is plumb to roof surface. Twist screwdriver to create a lever that will force bar to properly seat in the dovetail (see fig. 4b). Once bar is properly seated and aligned, insert flat head bolt and lock washer and thread into attachment hole. Once bolt has been started, it is easiest to use an impact driver or screw gun with a socket to secure it the rest of the way in.
3. It is also helpful to apply pressure downward on top of the bar to assure it is properly seated in the dovetail. This downward pressure allows the head of the flat head bolt to slide easier past the back of the bar.

### IMPORTANT

- Do not install runs of snow retention bar more than 100 feet long without a break to allow for thermal expansion.
- First row of snow guards are installed above outer most wall or support of the building.



**fig. 4a Looking Down-Slope during SnowMax Install**



**fig. 4b Inserting the Screwdriver**

Document version 07.02.2024  
07 72 53 Snow Guards



## **Snow Guard Maintenance**

Our snow guards must be inspected annually. Any defects or damage in materials and/or workmanship must be reported to Alpine SnowGuards immediately. Seller will not be responsible for snow guard systems that have not been properly maintained.

- Ensure snow guard brackets, accessories & components are intact, have not been displaced, and show no signs of damage or wear.
- Inspect fasteners into roof deck.
- Inspect snow guard-related waterproofing and replace or repair where necessary to ensure roof integrity.
- Snow accumulation on roofs and rooftop solar panels must be removed to avoid damage to the roof or panels, the building structure, and anything below. Heavy snowfalls, drifting, and the gradual accumulation of snow and ice can lead to less-than-ideal snow guard performance.
- Check each clamp set screw with a torque wrench to ensure proper fastening has been maintained (clamp-to-seam models).
- Inspect sealant, tape, and adhesive. Remove and replace as needed.

Document Version 04.15.24



## Pre-Painted Kynar® Stock Colors Pad Style Snow Guards and SnowMax Color Insert Strips



UNA-CLAD™ METAL  
COLOR SELECTION

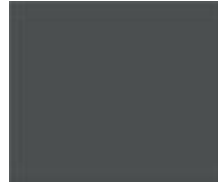
### Double-Sided Stock Colors



Colonial Red (51)



Classic Copper (75)



Charcoal Gray (05)



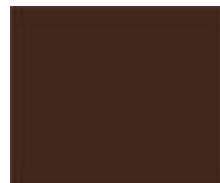
Slate Gray (03)



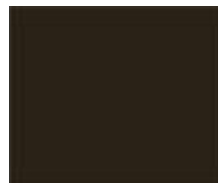
Matte Black (69)



Medium Bronze (66)



Mansard Brown (81)

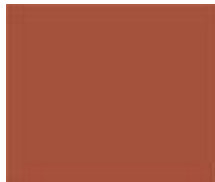


Dark Bronze (57)

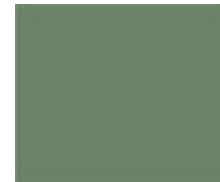


Hartford Green (33)

### Single-Sided Stock Colors



Terra Cotta (54)



Patina Green (39)



Hemlock Green (36)



Teal (21)



Brandywine (45)



Dark Ivy (42)



### Compatible Pad Style & SnowMax Fence Style Snow Guards

**Pad Style:** PD10, PD10R, PD11, PD21, PD30, PD30Z, PD40, PD40R, PD41

**Fence Style:** SnowMax-Corrugated, SnowMax-Standing Seam,  
SnowMax-Membrane 1.5 and Solar SnowMax-Universal

### Other Pad Style Material Options

Aluminum (AL) Copper (CU) Freedom Gray™ (FG) Lead-Coated Copper (LC) Rheinzink® (ZN)

Mill Finish aluminum pad-style snow guards can also be powder coated with  
**RAL TIGER Drylac® Exterior Powder Coatings** for an additional charge.