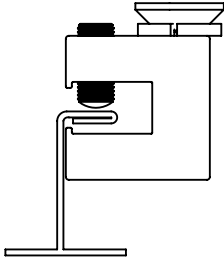
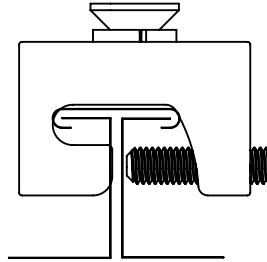


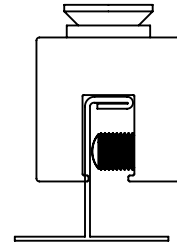
# SNOWMAX SEAM CONFIGURATIONS



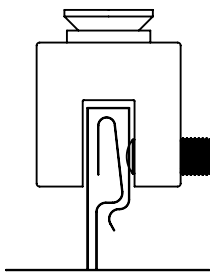
Snowmax-UT2  
Single Lock 5/8" or Larger Seam Width



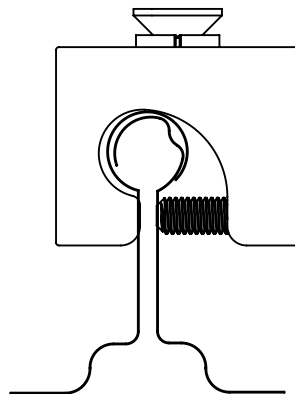
Snowmax-T2  
Tee Seam



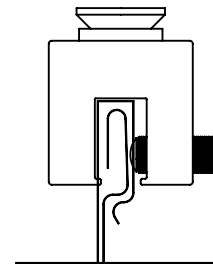
Snowmax-U2  
Single Lock 1/2" or Less Seam Width



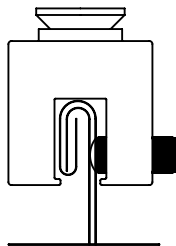
Snowmax-U2 Milled  
Snap Lock 1/2"-9/16" Seam Width



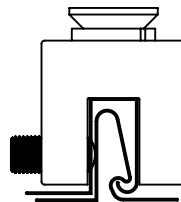
Snowmax-Z2  
Bulb Seam



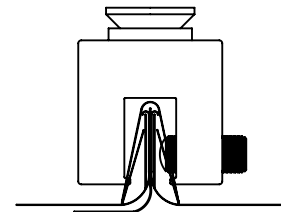
Snowmax-U2  
Snap Lock 7/16" or Less Seam Width



Snowmax-U2  
Double Lock



Snowmax-U2 Milled  
Vertical Nail Flange 33/64" or Less Seam Width



Snowmax-U2  
Applied Batten Cap