

Cut Sheet - PP325H2 6X12 (ALL MATERIALS)

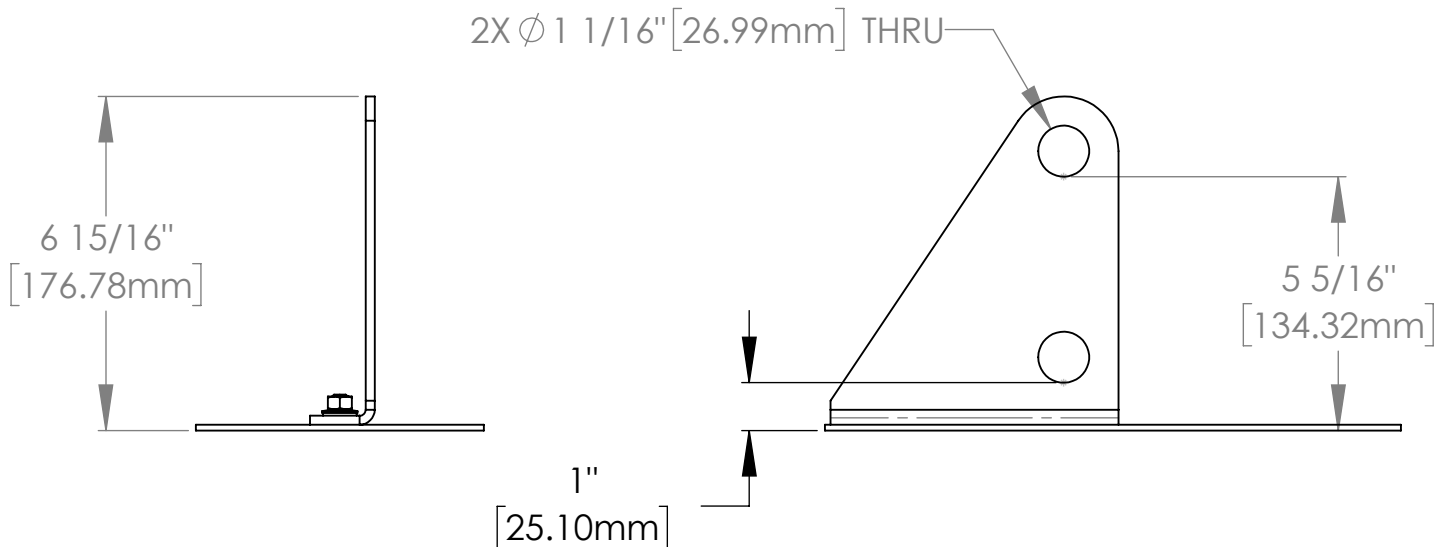
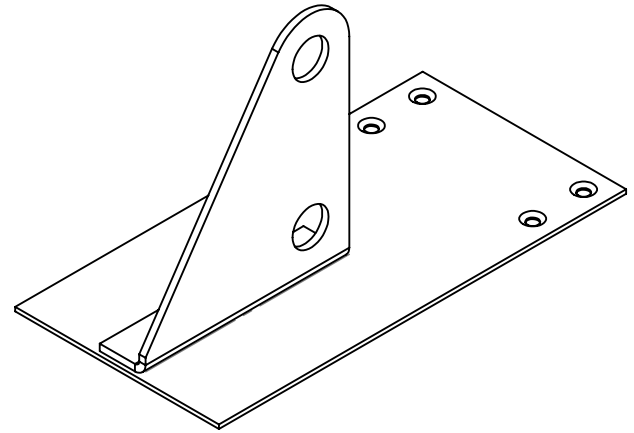
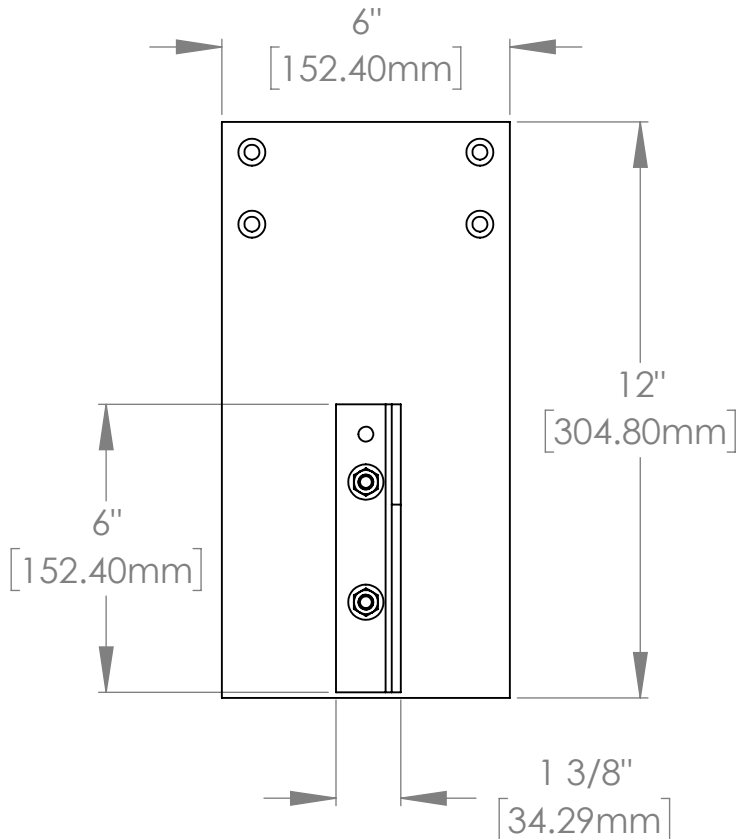
1. Installation to be completed in accordance with manufacturer's written specifications and installation instructions.
2. See spec sheet or contact manufacturer for detailed material, finishes, and configuration options.
3. Contact manufacturer for detailed layout.
4. Do not scale drawings.
5. Subject to change without notice.

Available Materials

- | | |
|---|--|
| <input type="checkbox"/> Aluminum w/ Stainless Base Plate | <input type="checkbox"/> Brass w/ Stainless Base Plate |
| <input type="checkbox"/> Brass w/ Brass Base Plate | |

Available Finishes

- | |
|--|
| <input type="checkbox"/> Mill Finish |
| <input type="checkbox"/> RAL Tiger Drylac Powder Coating |
| Color Code: _____ |



289 Harrel Street
Morrisville, VT 05661
Phone: 1.888.766.4273
Fax: 1.888.766.9994

Scale: 1:4

1/5/2022