

# Cut Sheet - PP315H3 6X8

1. Installation to be completed in accordance with manufacturer's written specifications and installation instructions.
2. See spec sheet or contact manufacturer for detailed material, finishes, and configuration options.
3. Contact manufacturer for detailed layout.
4. Do not scale drawings.
5. Subject to change without notice.
6. For patent information, visit our [Patent Page](#).

## Available Materials

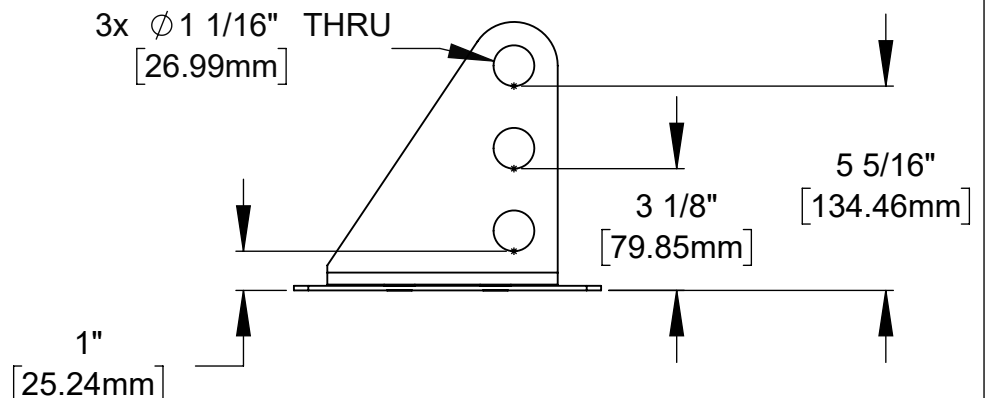
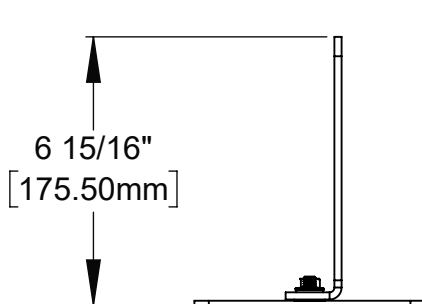
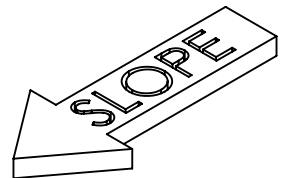
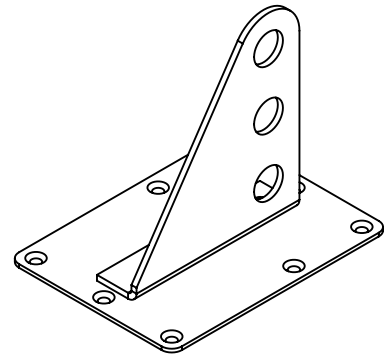
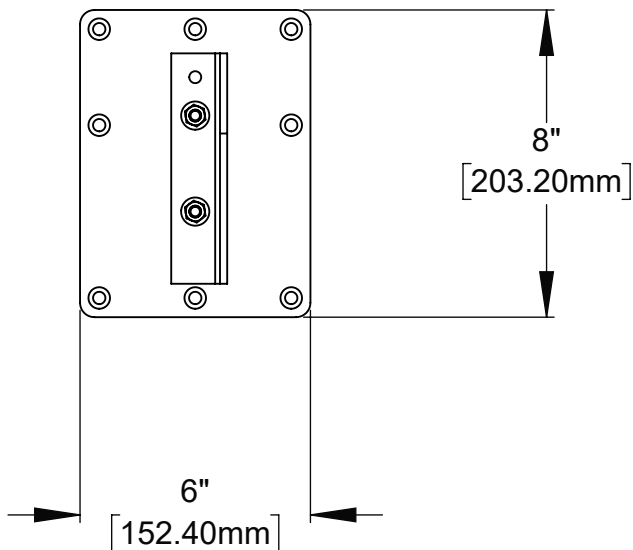
- ☐ Aluminum Bracket,  
Stainless Steel Base Plate
- ☐ Brass Bracket,  
Stainless Steel Base Plate
- ☐ Stainless Steel Bracket,  
Stainless Steel Base Plate

## Available Bracket Finishes

- ☐ Mill Finish
- ☐ Powder Coated  
(Ral Tiger Drylac Powder  
Coating Color Code: \_\_\_\_\_)

## Available Flashing

- ☐ PP99-CU  
(Copper Flashing)
- ☐ Customer Supplied



289 Harrel Street  
Morrisville, VT 05661  
Phone: 1.888.766.4273  
Fax: 1.888.766.9994  
Email: [Info@alpinesnowguards.com](mailto:Info@alpinesnowguards.com)

Scale: 1:5

6/20/2022