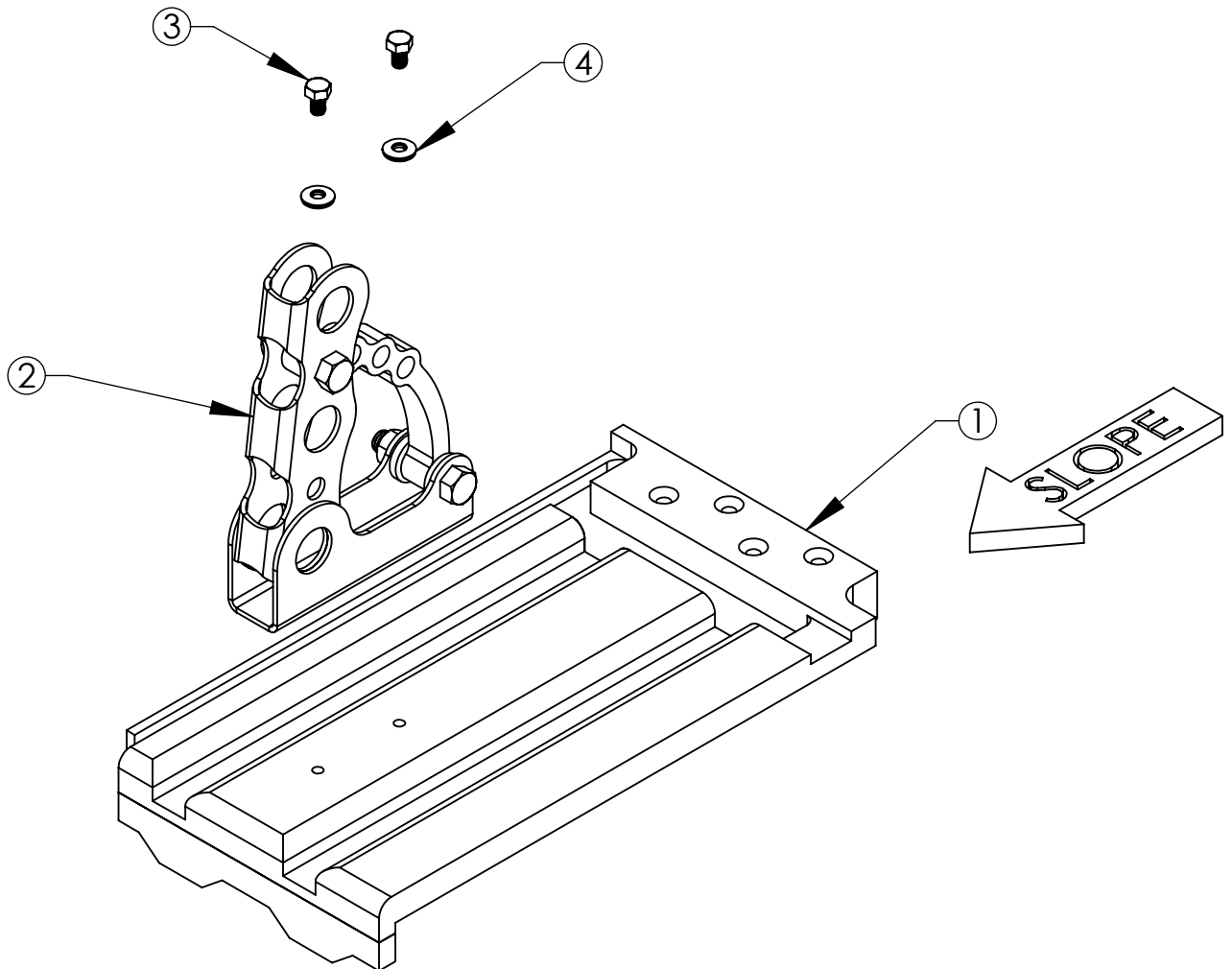


Assembly Sheet - PP235LFR

1. Installation to be completed in accordance with manufacturer's written specifications and installation instructions.
2. See spec sheet or contact manufacturer for detailed material, finishes, and configuration options.
3. Contact manufacturer for detailed layout.
4. Do not scale drawings.
5. Subject to change without notice.
6. For patent information, visit our [Patent Page](#).



ITEM NO.	PART CODE	DESCRIPTION	QTY
1	TILE LUD-FRENCH-AL	3PP LUDO FRENCH TILE ALUMINUM	1
2	PP225-AL-UPKIT	225 3PP BRACKET ONLY-ALUMINUM	1
3	B-HX SS-.313-18X.5	STAINLESS STEEL HEX BOLT .3125-18X5	2
4	W-NEO SS-.313	SS NEO WASHER .313 ID	2



289 Harrel Street
Morrisville, VT 05661
Phone: 1.888.766.4273
Fax: 1.888.766.9994
Email: Info@alpinesnowguards.com

Scale: 1:4

1/3/2022