

Cut Sheet - PP225 (8"X12" Base or Larger) (All Materials)

1. Installation to be completed in accordance with manufacturer's written specifications and installation instructions.
2. See spec sheet or contact manufacturer for detailed material, finishes, and configuration options.
3. Contact manufacturer for detailed layout.
4. Do not scale drawings.
5. Subject to change without notice.
6. For patent information, visit our [Patent Page](#).

Available Materials

- | | |
|---|---|
| <input type="checkbox"/> Aluminum Bracket,
Stainless Steel Base | <input type="checkbox"/> Brass Bracket,
Brass Base |
| <input type="checkbox"/> Stainless Steel Bracket,
Stainless Steel Base | <input type="checkbox"/> Brass Bracket,
Stainless Steel Base |

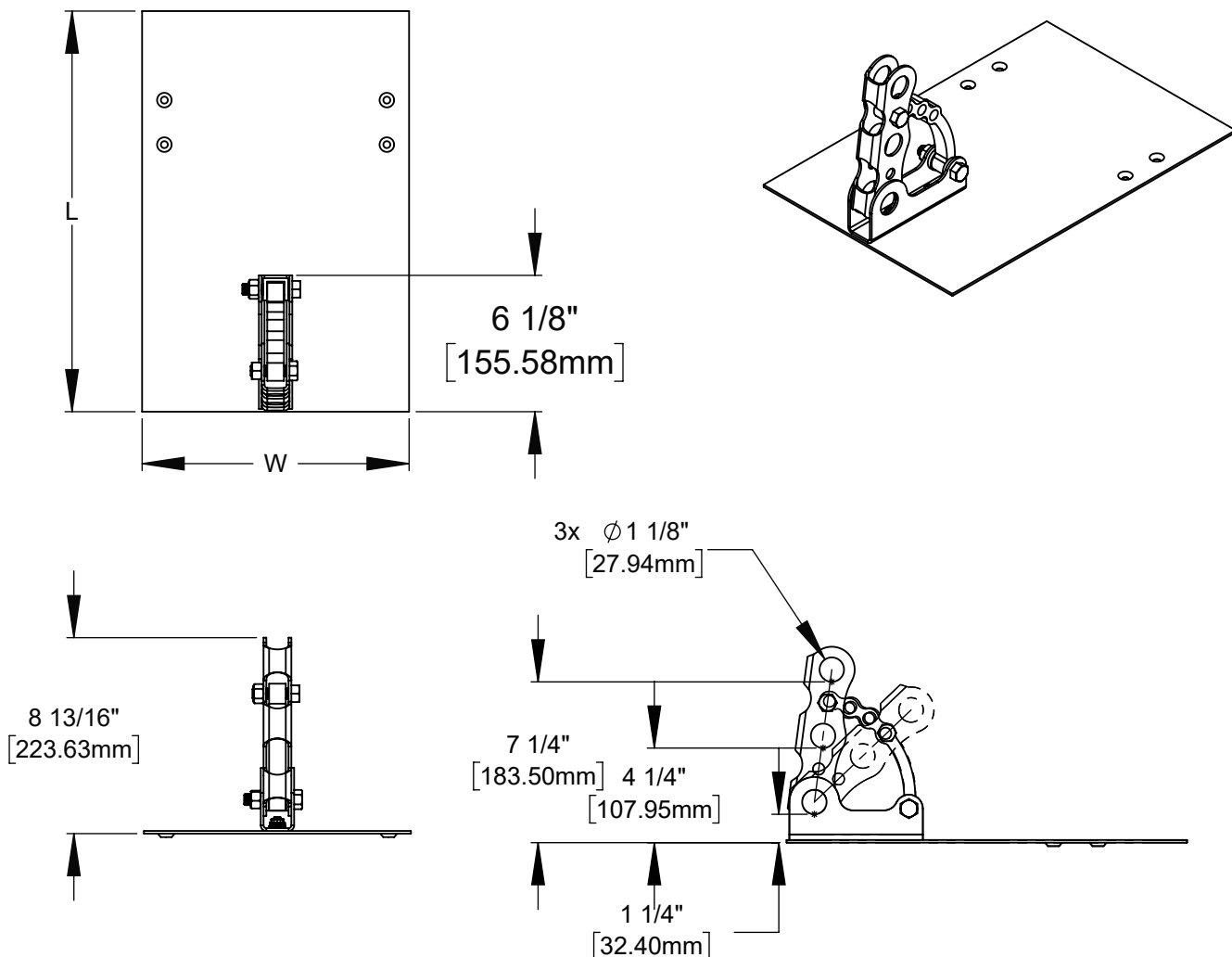
Available Finishes

- ☐ Mill Finish (Standard)
- ☐ Powder Coating
(RAL Tiger Drylac Powder
Coating Color Code: _____)

Base Plate Size

L= _____

W= _____



NOTE: Depending on bracket material, connector and spacer components may differ. See specific bracket assembly sheet.

Specify L and W to match slate size



289 Harrel Street
Morrisville, VT 05661
Phone: 1.888.766.4273
Fax: 1.888.766.9994
Email: Info@alpinesnowguards.com

Scale: 1:8

1/10/2023