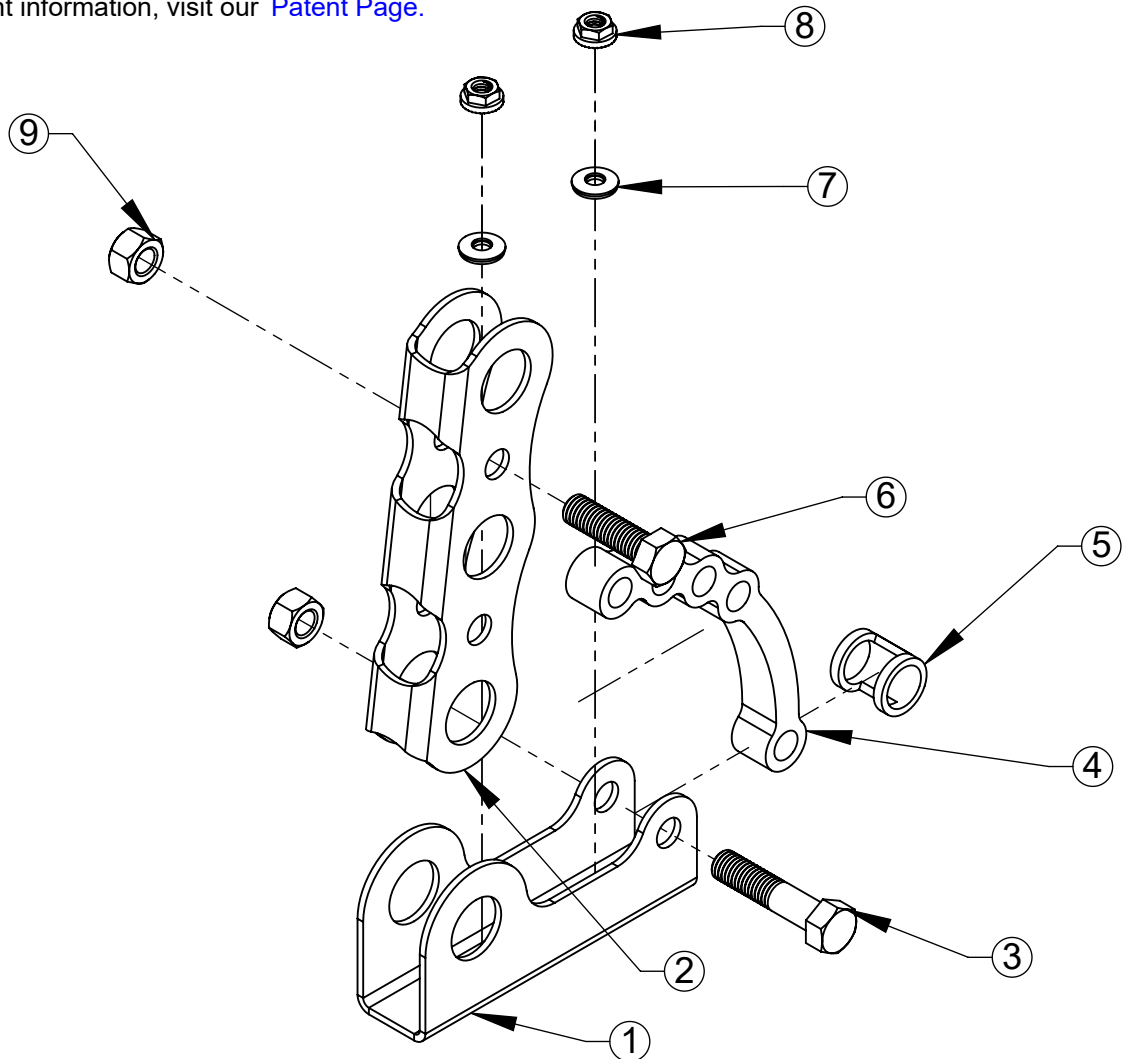


Assembly Sheet - PP225-AL-UPKIT

1. Installation to be completed in accordance with manufacturer's written specifications and installation instructions.
2. See spec sheet or contact manufacturer for detailed material, finishes, and configuration options.
3. Contact manufacturer for detailed layout.
4. Do not scale drawings.
5. Subject to change without notice.
6. For patent information, visit our [Patent Page](#).



ITEM NO.	PART CODE	DESCRIPTION	QTY
1	BASE-PP225-AL	BASE FOR 225 AL UPKIT	1
2	UPRT-PP225-AL	AL 225 UPRIGHT FOR UPKIT	1
3	B-HX SS-.5-13X2.25	SS HEX BOLT .5-13X2.25	1
4	PP225 CONNECT AL	PP225 AL-CONNECTOR	1
5	UNIV SPACER AL-.78	SPACER 1.125 WIDE / .78 GAP-AL	1
6	B-HX SS-.5-13X1.75	SS HEX BOLT .5-13X1.75	1
7	W-NEO SS-.313	SS NEO WASHER .313 ID (INCLUDED IN POLY KIT GF NEO)	2
8	N-FL SS-.313-18	SS FLANGE NUT .313-18	2
9	N-HX SS -.5-13	SS HEX NUT .5-13	2



289 Harrel Street
 Morrisville, VT 05661
 Phone: 1.888.766.4273
 Fax: 1.888.766.9994
 Email: Info@alpinesnowguards.com

Scale: 1:3

12/27/2022