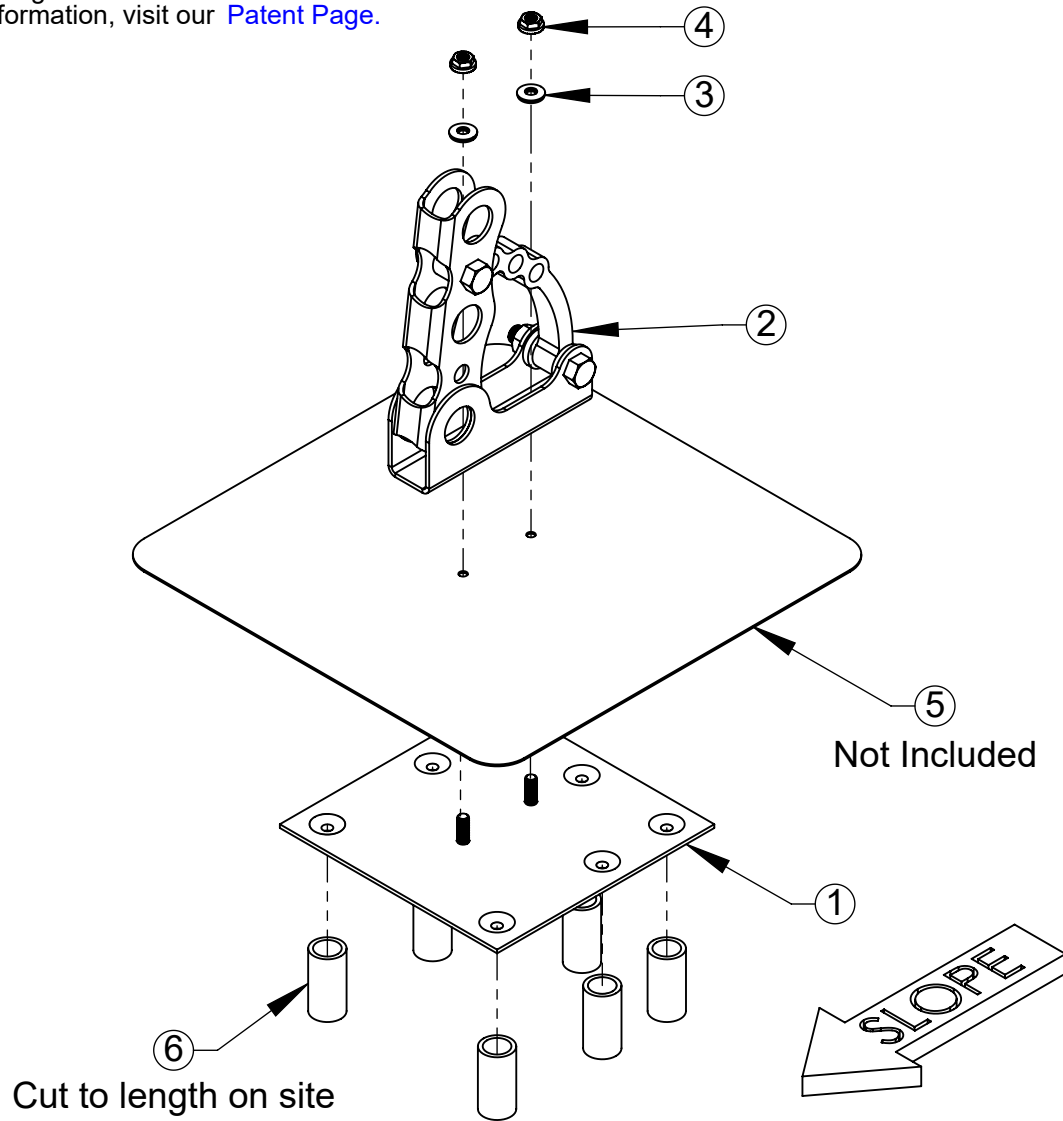


# Assembly Sheet - PP215R

1. Installation to be completed in accordance with manufacturer's written specifications and installation instructions.
2. See spec sheet or contact manufacturer for detailed material, finishes, and configuration options.
3. Contact manufacturer for detailed layout.
4. Do not scale drawings.
5. Subject to change without notice.
6. For patent information, visit our [Patent Page](#).



ITEM NO.	PART CODE	DESCRIPTION	QTY
1	BASE SS 8X8-200R	STAINLESS STEEL 8X8-200R BASE PLATE	1
2	PP225-UPKIT	225 3PP BRACKET ONLY	1
3	W-NEO SS-.313	SS NEO WASHER .313 ID (INCLUDED IN POLY KIT GF NEO)	2
4	N-FL SS-.313-18	SS FLANGE NUT .313-18	2
5	NOT INCLUDED	TARGET PATCH FLASHING (CUSTOMER SUPPLIED OR PP99-CU)	1
6	FERRULE	FERRULE FOR 215R- 1" OD-AL (SOLD SEPARATELY)	7



289 Harrel Street  
Morrisville, VT 05661  
Phone: 1.888.766.4273  
Fax: 1.888.766.9994  
Email: [Info@alpinesnowguards.com](mailto:Info@alpinesnowguards.com)

Scale: 1:5

7/26/2022