

PD40 and PD400F-CU Snow Guard Installation Instructions

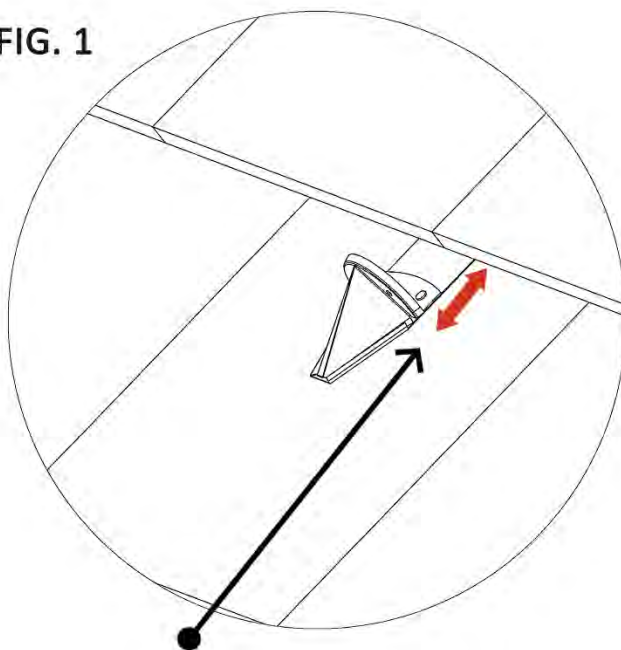
ROOF TYPES

- New Composition (Asphalt) Shingle
- New Synthetic Shake or Slate (For synthetic materials $\leq 3/8$ " thickness)

INSTALLATION

1. Install the first 2 rows of roofing material.
2. Place snow guard low enough on roofing materials to leave a minimum gap of $5/8$ ", or at least 3 times the thickness of the roofing materials, whichever is greater (*fig. 1*).
3. Above the nail line, attach the snow guard. Use a minimum of 2 fasteners of a material compatible with snow guard and roof system.

FIG. 1



PROPER SNOW GUARD PLACEMENT

Ex. $0.5''$ shingle thickness $\times 3 = 1.5''$ spacing
Back of head is $1.5''$ from front edge of shingle

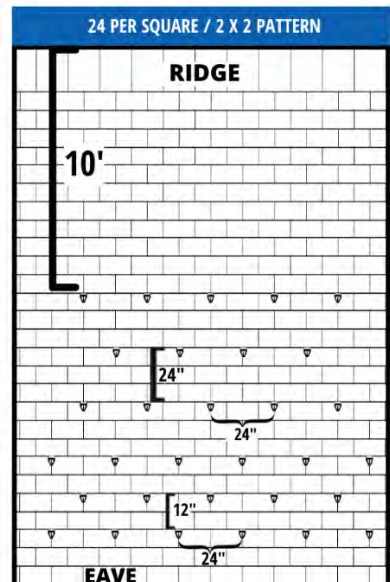
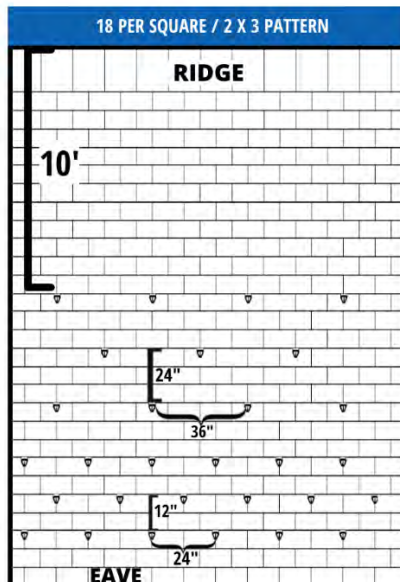
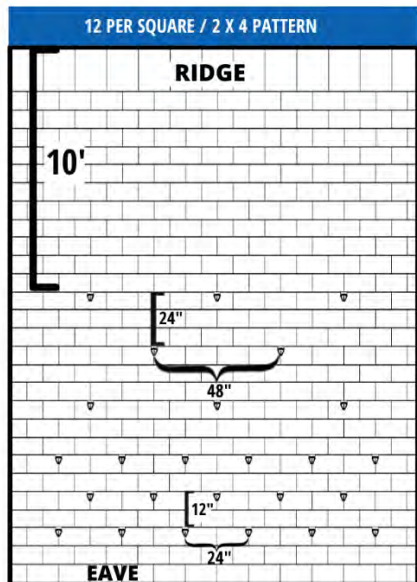
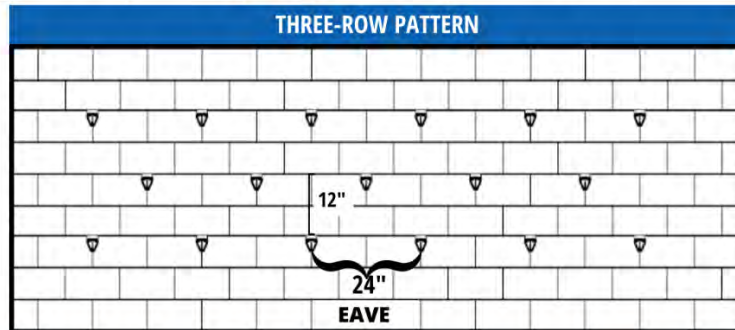
PD40 and PD400F-CU Snow Guard Installation Instructions

STANDARD SNOW GUARD LAYOUT OPTIONS

IMPORTANT: All layouts begin with a 3-row pattern. Estimated quantities provided include 3-row pattern. If you have any questions, please contact us at 888-766-4273.

Please use the guidelines below to determine the appropriate layout for your installation.

PROJECT DETAILS				LAYOUT DETAILS		
Roof Type	Rafter Length	Ground Snow Load (PSF)	Roof Pitch		Layout	Est. Snow Guard QTY.
Comp. Shingle	Any	60 psf or Less	6/12 or Less	→	3-Row Pattern	17 per 10' of Eave
	15' or Less	60 psf or Less	7/12 to 16/12	→		
Synthetic Slate	15' or Less	60 psf or Less	16/12 or Less	→		
Comp. Shingle or Synthetic Slate	15' or greater	60 psf or Less	16/12 or Less	→	2 x 4 Pattern	12 per roofing square
	Any	61 - 90 psf	16/12 or Less	→	2 x 3 Pattern	18 per roofing square
	Any	91 - 120 psf	16/12 or Less	→	2 x 2 Pattern	24 per roofing square



Document Version 03.14.2023
07 72 53 Snow Guards