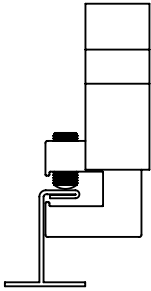
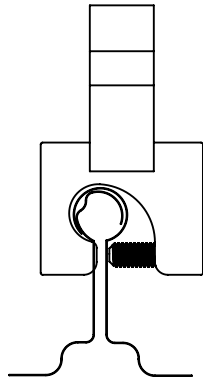


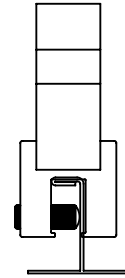
# ASG3000 SEAM CONFIGURATIONS



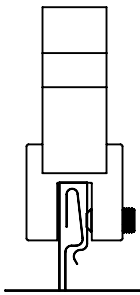
ASG3000G-T-AL  
Single Lock 5/8" or Greater Seam Width



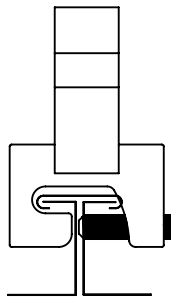
ASG3000G-Z2-AL  
Bulb Seam



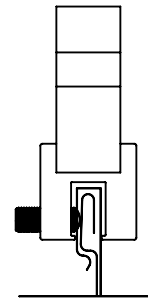
ASG3000G-U-AL  
Single Lock 13/32" or Less Seam Width



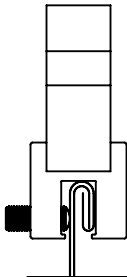
ASG3000G-U-AL Milled  
Snap Lock 7/16"-33/64" Seam Width



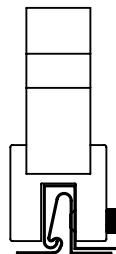
ASG3000G-T2-AL  
Tee Seam 1" Seam Width



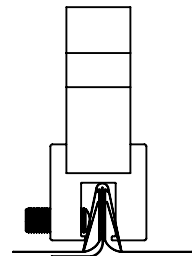
ASG3000G-U-AL  
Snap Lock 7/16" or Less Seam Width



ASG3000G-U-AL  
Double Lock



ASG3000G-U-AL Milled  
Vertical Nail Flange 33/64" or Less Seam Width



ASG3000G-U-AL  
Applied Batten Cap



289 Harrel Street  
Morrisville, VT 05661  
Phone: 1.888.766.4273  
Fax: 1.888.766.9994  
Email: [Info@alpinesnowguards.com](mailto:Info@alpinesnowguards.com)

Scale: 1:3

6/1/2022