



ASG2000B-Mini Pipe-Style Snow Guard Submittal Document Set

ROOF TYPES

- New / Existing Copper Standing Seam
- New / Existing Lead Coated Copper Standing Seam

AVAILABLE MATERIALS

- Brass and Brass Accessories (BR)

FEATURES/ADVANTAGES

- Forged from a solid block of recycled Brass
- Measures 2" L x 1" W x 2 13/16" H overall
- Accepts 3/8" OD Rod
- End Collars are available for this system
- Set screws will provide a secure attachment point without penetrating roofing materials
- Clamp-to-Seam technology will not void panel manufacturers warranties
- Ideal option for installing a pipe-style snow guard system to a copper standing seam roof



Cut Sheet - ASG2000B-MINI

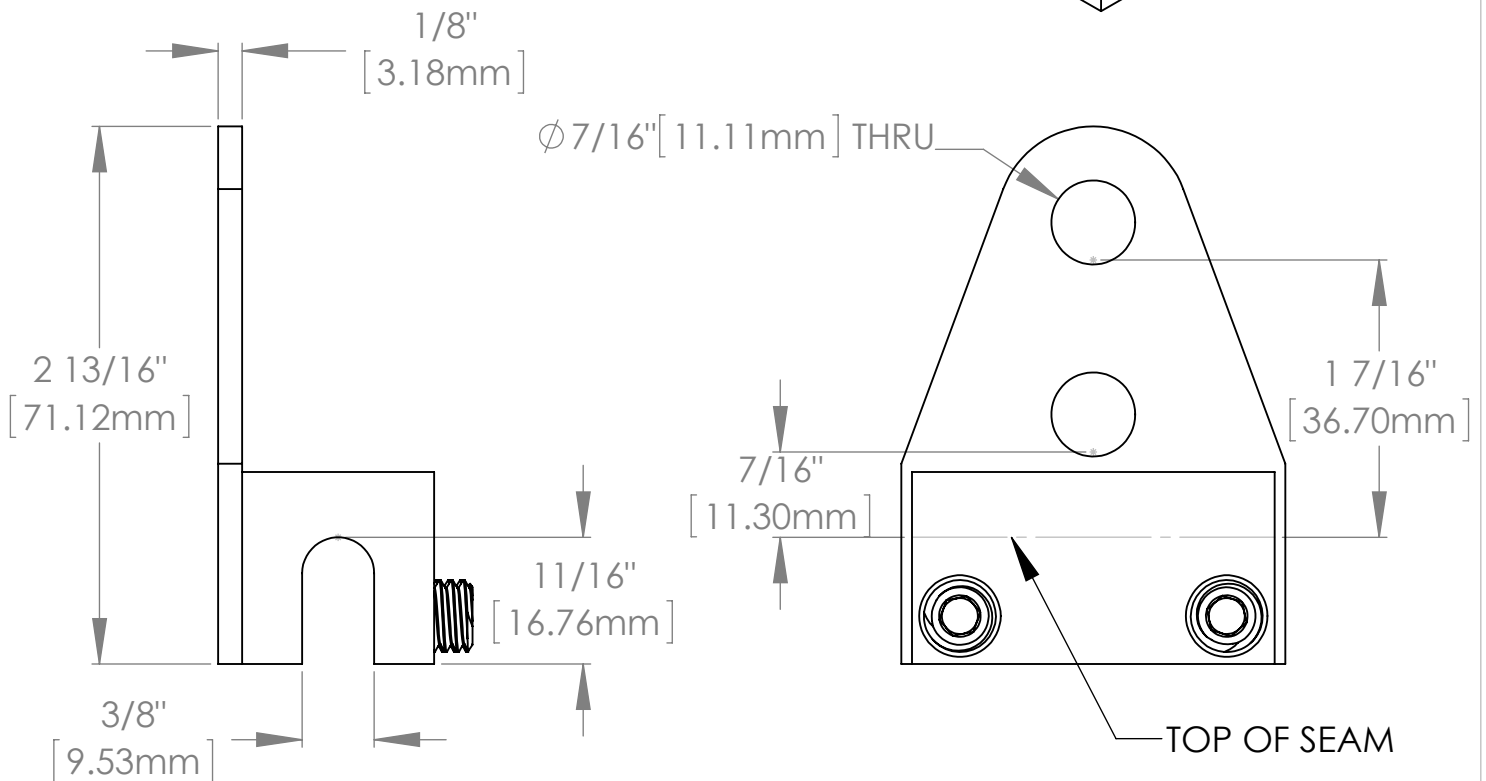
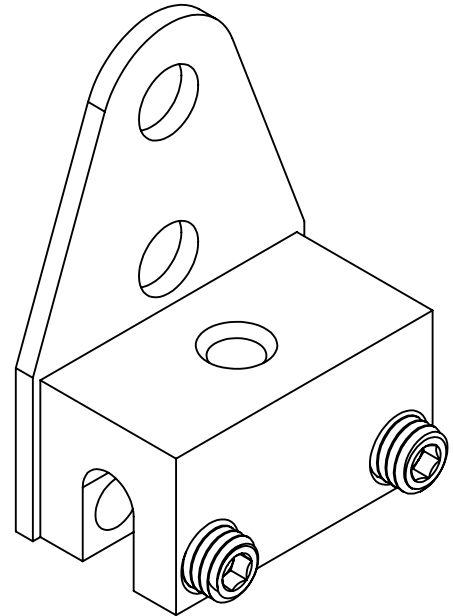
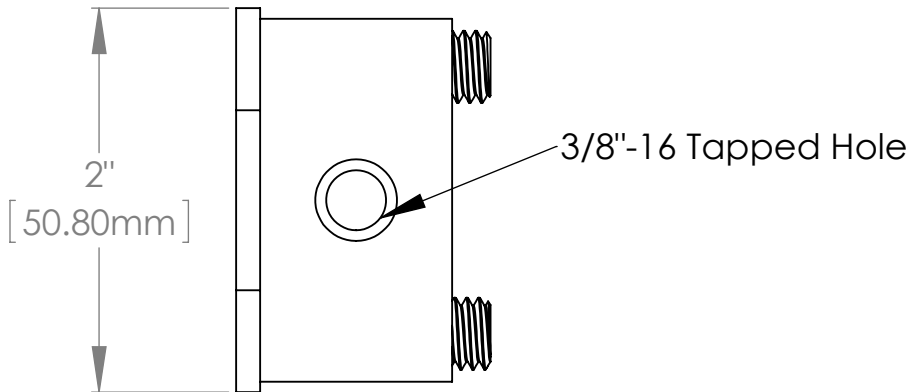
1. Installation to be completed in accordance with manufacturer's written specifications and installation instructions.
2. See spec sheet or contact manufacturer for detailed material, finishes, and configuration options.
3. Contact manufacturer for detailed layout.
4. Do not scale drawings.
5. Subject to change without notice.
6. For patent information, visit our [Patent Page](#).

I have verified that this clamp/bracket will fit the seam for this project.

Quote #: _____

Signature: _____ Date: _____

To confirm order, return signed cut sheet and sales quote.



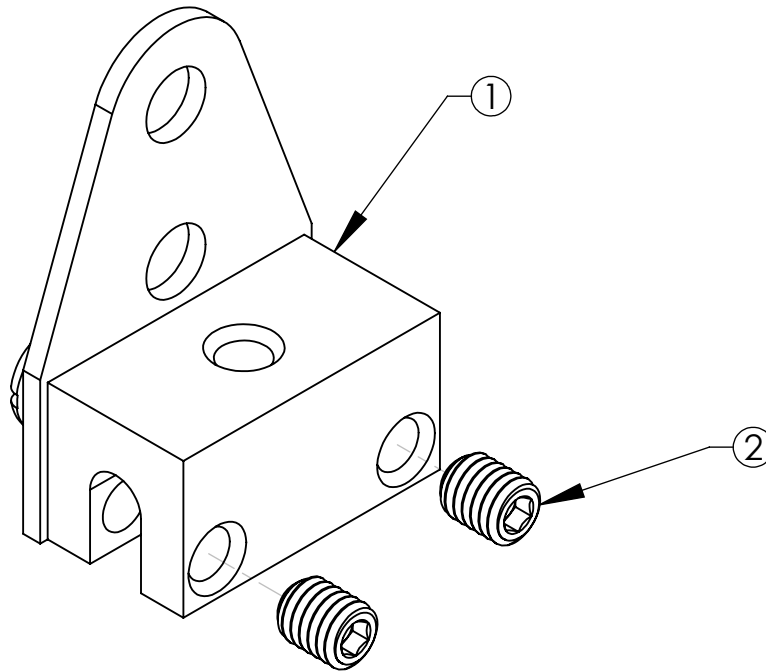
289 Harrel Street
Morrisville, VT 05661
Phone: 1.888.766.4273
Fax: 1.888.766.9994
Email: Info@alpinesnowguards.com

Scale: 1:1

11/20/2020

Assembly Sheet - ASG2000B-MINI

1. Installation to be completed in accordance with manufacturer's written specifications and installation instructions.
2. See spec sheet or contact manufacturer for detailed material, finishes, and configuration options.
3. Contact manufacturer for detailed layout.
4. Do not scale drawings.
5. Subject to change without notice.
6. For patent information, visit our [Patent Page](#).



ITEM NO.	PART CODE	DESCRIPTION	QTY
1	ASG2000B-MINI	2000B-MINI 2 RD .375 SSR-BR	1
2	SET-O SS-.375-16X.5	SCREW SET SS OP .375-16X.5 (INCLUDED IN POLY KIT BRASS UTL)	2

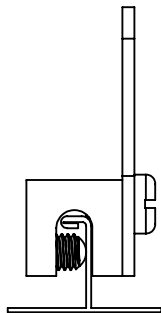


289 Harrel Street
Morrisville, VT 05661
Phone: 1.888.766.4273
Fax: 1.888.766.9994
Email: Info@alpinesnowguards.com

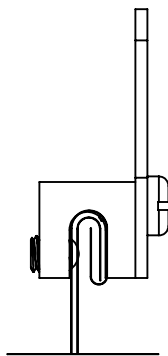
Scale: 1:1

11/24/2020

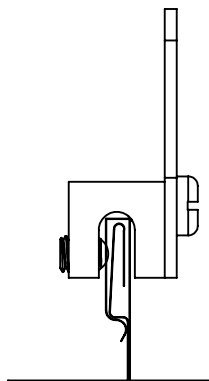
ASG2000B-MINI SEAM CONFIGURATIONS



Single Lock 2000B-MINI 1/4"
or Less Seam Width



Double Lock 2000B-MINI 1/4"
or Less Seam Width



Snap Lock 2000B-MINI 1/4"
or Less Seam Width



ASG2000B-Mini Specification Sheet Snow Guards

PART 1 – GENERAL

1.1 SUMMARY

A. WORK INCLUDES

1. ASG2000-Mini Snow guards that do not penetrate the roof using clamp to seam.
2. Coordinate with installation of roof to assure proper placement of snow guards.
3. Provide appropriate snow guard and fasteners for roof system

B. RELATED SECTIONS

1. Section 07600: Flashing and Sheet Metal. MasterFormat 2016 07 60 00
2. Section 07720: Snow Guards. MasterFormat 2016 07 72 00
3. Section 07320: Roofing Tiles. MasterFormat 2016 07 32 00
4. Division 7: Thermal and Moisture Protection.

1.2 SYSTEM DESCRIPTION

A. COMPONENTS Snow guard system consisting of snow guard bracket, (2) set screws, rod, external couplings and end collars.

1. ASG2000B-Mini, bracket
2. SET-O SS-.375-16x.5, set screws
3. RD77, rod
4. RD87-BR, external couplings
5. RD65, end collars

B. ACCESSORIES

1. RD95, ice flags (optional)

C. DESIGN REQUIREMENTS

1. Spacing to be recommended by manufacturer or building engineer.
2. Install a minimum of (2) set screws per snow guard.
3. It is important to design new structures or assess existing structures to make sure they can withstand retained snow loads.
4. A break in the assembly is required every 100-feet for thermal expansion.
5. Rods have a 6-inch maximum allowable overhang from end bracket.

1.3 SUBMITTAL

A. Submit manufacturer's specifications, standard detail drawings, installation instructions, and recommended layout.

1.4 QUALITY ASSURANCE

A. Installer to be experienced in installation of specified roofing material and snow guards for not less than 5 years in the area of the project.

1.5 DELIVERY / STORAGE / HANDLING

A. Inspect material upon delivery and order replacements for any missing or defective items. Keep material dry, covered and off the ground until installed.



ASG2000B-Mini Specification Sheet Snow Guards

PART 2 – PRODUCTS

2.1 MANUFACTURER

A. Alpine SnowGuards®, a Division of Vermont Slate & Copper Services, Inc.
289 Harrel St., Morrisville, VT 05661 | 888-766-4273 | www.alpinesnowguards.com

2.2 MATERIALS

- A. ASG2000B-Mini – 360 Brass
- B. RD77, rod, 3/8" OD – 260 Half Hard Brass
- C. RD87-BR, external couplings – 360 Brass
 - 1. External and exposed coupling can also serve as an expansion mechanism 3" long.
- D. RD65, end collars - 304 Stainless Steel
- E. RD95, ice flags (optional) – 260 Half Hard Brass

2.3 FINISH

- A. Mill Finish – standard

PART 3 – EXECUTION

3.1 EXAMINATION

- A. Substrate
 - 1. Inspect structure on which snow guard system is to be installed and verify it will withstand any additional loading that it may incur. Notify general contractor of any deficiencies before installing Alpine SnowGuards' products.
 - 2. Verify roofing material has been installed correctly prior to installing snow guards.

3.2 INSTALLATION

- A. Comply with architectural drawings and snow guard manufacturer's recommendations for location of system. Comply with manufacturer's written installation instructions for installation and layout.

Document Version 12.08.2022
07 72 53 Snow Guards



ASG2000B-MINI Snow Guard Installation Instructions

ROOF TYPES

- Copper Standing Seam
- Lead Coated Copper Standing Seam

CONSIDERATIONS

- ASG2000B-MINI bracket engages machine folded **seams up to ¼" thick**.
- Maximum bracket spacing is 24" on center.
- ASG2000B-MINI is only recommended for roofs meeting the following criteria: $\leq 4/12$ pitch, with a rafter length $\leq 10'$, and a ground snow load of ≤ 40 psf.

BRACKET INSTALLATION

1. Position clamps appropriately on panel seam.
2. Using a 3/16" Allen-wrench attachment tip for a 1/4" drive screw gun, tighten and retighten set screws as seam material compresses.
Note: On low seam profiles, a 4"-bit extension on screw gun will facilitate this work.
Contact Alpine SnowGuards for proper torque settings for various materials.

ROD INSTALLATION

1. Insert 3/8" brass rod (77-BR)
2. On runs longer than 6' or 12', join rods with external couplings (87-BR)
End collars (RD65) should be placed over each end of each line of rod. On inside of each clamp, a 1" minimum gap is required to allow for thermal expansion.
3. Tighten set screw on collar until it no longer slips.

SNOW GUARD LAYOUT FOR PIPE-STYLE BRACKETS

- Contact Alpine SnowGuards for detailed layout.
- Do not install runs of snow retention more than 100' long without a break to allow for thermal expansion.
- First row of snow guards is installed above outer most wall or support of the building.
- Do not use as fall arrest anchors.
- Be sure that panels are securely fastened to roof to absorb loads being transferred by snow retention system.

Document Version 05.22.24
07 72 53 Snow Guards



Snow Guard Maintenance

Our snow guards must be inspected annually. Any defects or damage in materials and/or workmanship must be reported to Alpine SnowGuards immediately. Seller will not be responsible for snow guard systems that have not been properly maintained.

- Ensure snow guard brackets, accessories & components are intact, have not been displaced, and show no signs of damage or wear.
- Inspect fasteners into roof deck.
- Inspect snow guard-related waterproofing and replace or repair where necessary to ensure roof integrity.
- Snow accumulation on roofs and rooftop solar panels must be removed to avoid damage to the roof or panels, the building structure, and anything below. Heavy snowfalls, drifting, and the gradual accumulation of snow and ice can lead to less-than-ideal snow guard performance.
- Check each clamp set screw with a torque wrench to ensure proper fastening has been maintained (clamp-to-seam models).
- Inspect sealant, tape, and adhesive. Remove and replace as needed.

Document Version 04.15.24